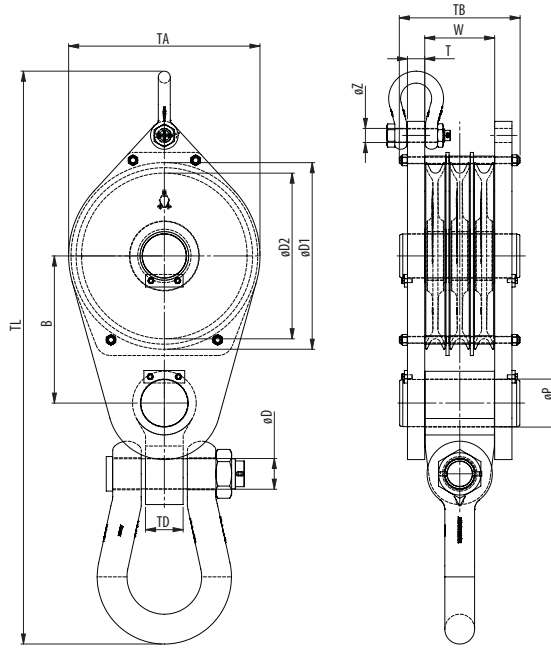
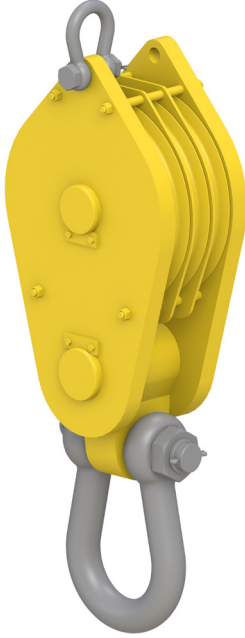


CONSTRUCTION BLOCK WITH SHACKLE

3 SHEAVE



| Model No. | WLL (UStons) | For wire ød (inch) | Dimensions (inch) | | | | | | | | | | | | Weight (lbs) |
|------------------|--------------|--------------------|-------------------|------|------|-----|-----|-----|-----|-----|------|------|------|------|--------------|
| | | | øD1 | øD2 | B | øD | øP | TD | øZ | T | TA | TB | TL | W | |
| CB 260.xx.3.36,5 | 40 | 1/2 - 5/8 | 11.8 | 10.2 | 10.7 | 2.4 | 3.1 | 2.4 | 1.1 | 1.2 | 12.2 | 9.9 | 39.6 | 5.8 | 298 |
| CB 320.xx.3.55 | 60 | 5/8 - 3/4 | 14.4 | 12.6 | 12.5 | 2.9 | 3.9 | 3.1 | 1.2 | 1.4 | 14.8 | 11.3 | 48.0 | 6.8 | 509 |
| CB 355.xx.3.73 | 80 | 3/4 - 7/8 | 16.1 | 14.0 | 14.1 | 3.4 | 5.1 | 4.3 | 1.6 | 1.8 | 16.5 | 13.1 | 57.6 | 7.8 | 825 |
| CB 400.xx.3.91 | 100 | 3/4 - 1 | 18.1 | 15.7 | 15.3 | 3.4 | 5.1 | 4.3 | 1.6 | 1.8 | 18.5 | 13.4 | 59.9 | 7.8 | 988 |
| CB 450.xx.3.110 | 121 | 7/8 - 1 1/8 | 20.3 | 17.7 | 16.9 | 3.9 | 5.9 | 4.7 | 1.8 | 2.2 | 20.9 | 15.2 | 68.7 | 8.8 | 1513 |
| CB 528.xx.3.127 | 140 | 7/8 - 1 1/4 | 23.4 | 20.8 | 18.5 | 3.9 | 5.9 | 4.7 | 1.8 | 2.2 | 24.0 | 15.2 | 71.9 | 8.8 | 1813 |
| CB 575.xx.3.145 | 160 | 1 - 1 1/16 | 25.6 | 22.6 | 20.2 | 4.4 | 6.7 | 5.5 | 2.1 | 2.4 | 26.4 | 17.6 | 79.1 | 10.5 | 2510 |
| CB 630.xx.3.165 | 182 | 1 - 1 1/2 | 28.0 | 24.8 | 21.4 | 4.4 | 6.7 | 5.5 | 2.1 | 2.4 | 28.7 | 17.6 | 81.5 | 10.5 | 2656 |

Minimum Ultimate Strength = 4 x WLL

- Standard delivered with bronze bearing
- The dimensions in this table are indicative only. A drawing will always be submitted prior production and will be the leading document when discussing dimensions.
- Blocks shown here are standard models; inquiries for custom versions are welcome.
- Refer to wire rope manufacturers D/d ratio guideline.

WARNING SEE OUR WARNING & SAFETY INFORMATION ON PAGES 136 - 149

