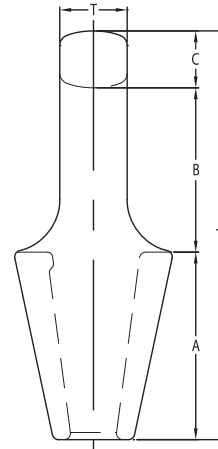
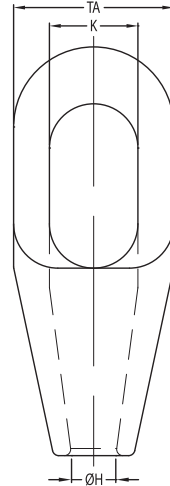


CLOSED SPELTER SOCKETS

QUENCHED AND TEMPERED CAST STEEL



Model No.	MBL (UStons)	for wire ϕ		Strand ϕ		Dimensions (inch)								Weight (lbs)
		(mm)	(inch)	(mm)	(inch)	A	B	C	ϕH	K	T	TA	TL	
CSS 296	9	6-7	1/4	-	-	1.97	1.57	0.43	0.36	0.87	0.51	1.46	3.98	1
CSS 297	13	8-10	3/8	-	-	2.24	1.89	0.55	0.50	0.98	0.69	1.69	4.69	1
CSS 298	22	11-13	7/16 - 1/2	-	-	2.50	2.32	0.69	0.57	1.18	0.89	2.01	5.51	2
CSS 299	28	14-16	9/16 - 5/8	13	1/2	2.99	2.56	0.83	0.71	1.42	1.02	2.64	6.38	3
CSS 200	44	18-19	3/4	14-16	9/16 - 5/8	3.50	3.07	1.06	0.86	1.65	1.26	2.99	7.64	5
CSS 201	61	20-22	7/8	18 - 19	3/4	3.98	3.54	1.30	0.98	1.85	1.50	3.62	8.82	8
CSS 204	83	23-26	1	20 - 22	7/8	4.49	4.06	1.42	1.13	2.24	1.73	4.09	9.96	12
CSS 207	99	27-30	1 1/8	23 - 26	1	5.00	4.57	1.54	1.30	2.56	2.01	4.49	11.10	16
CSS 212	138	31-36	1 1/4 - 1 3/8	27 - 28	1 1/16 - 1 1/8	5.47	5.12	1.69	1.54	2.80	2.24	4.96	12.28	22
CSS 215	165	37-39	1 1/2	30 - 32	1 3/16 - 1 1/4	5.98	6.10	2.01	1.67	3.19	2.48	5.35	14.09	29
CSS 217	187	40-42	1 5/8	33 - 35	1 3/16 - 1 3/8	6.50	6.73	2.13	1.79	3.27	2.76	5.75	15.35	37
CSS 219	248	43-48	1 3/4 - 1 7/8	36 - 40	1 7/16 - 1 5/8	7.48	7.80	2.17	2.07	3.66	2.99	6.73	17.44	56
CSS 222	309	49-54	2 - 2 1/8	42 - 45	1 5/8 - 1 3/4	8.50	8.82	2.44	2.33	3.94	3.23	7.60	19.76	81
CSS 224	397	55-60	2 1/4 - 2 3/8	46 - 48	1 13/16 - 1 7/8	8.98	9.72	2.87	2.56	4.41	3.62	8.50	21.57	111
CSS 226	468	61-68	2 1/2 - 2 5/8	50 - 54	2 - 2 1/8	9.76	10.63	3.11	2.95	5.51	4.02	9.49	23.50	144
CSS 227	507	69-75	2 3/4 - 2 7/8	56 - 62	2 1/4 - 2 1/2	10.98	11.26	3.11	3.13	6.26	4.88	10.75	25.35	201
CSS 228	617	76-80	3 - 3 1/8	64 - 67	2 1/2 - 2 5/8	12.40	11.73	3.27	3.47	6.73	5.24	11.50	27.40	257
CSS 229	689	81-86	3 1/4 - 3 3/8	69 - 76	2 3/4 - 3	12.99	12.24	4.02	3.64	7.24	5.75	12.24	29.25	274
CSS 230	794	87-93	3 1/2 - 3 5/8	78 - 86	3 1/16 - 3 3/8	14.02	12.99	4.02	3.89	7.76	6.26	12.99	31.02	388
CSS 231	965	94-102	3 3/4 - 4	88 - 96	3 7/16 - 3 3/4	15.00	14.02	4.25	4.24	8.50	7.01	14.25	33.27	502
CSS 233	1323	108-115	4 1/4 - 4 1/2	98 - 110	3 7/8 - 4 3/16	17.72	16.73	4.92	5.10	9.25	7.48	15.94	39.37	712
CSS 240	1543	120-130	4 3/4 - 5	112 - 124	4 7/16 - 4 7/8	19.69	20.67	4.92	5.79	10.24	7.87	17.72	45.28	986
CSS 245	1764	135-140	5 1/4 - 5 1/2	125 - 132	4 15/16 - 5 3/16	21.26	19.49	5.91	6.07	11.42	8.66	20.47	46.65	1422
CSS 250	2205	142-153	5 3/4 - 6	133 - 143	5 1/4 - 5 5/8	23.03	20.87	6.69	6.74	12.01	9.45	21.46	50.59	1634
CSS 255	2447	154-165	6 1/2 - 6 1/4	144 - 154	5 11/16 - 6 1/4	24.80	22.24	6.89	7.29	12.99	9.84	22.64	53.94	1896
CSS 260	2756	166-178	6 3/4 - 7	155 - 166	6 1/4 - 6 3/4	26.77	23.23	7.09	7.84	12.99	10.63	23.43	57.09	2172
CSS 265	3086	180-191	7 1/4 - 7 1/2	167 - 179	6 9/16 - 7 1/8	28.54	24.41	7.48	8.39	13.78	11.42	24.61	60.43	2608
CSS 270	3527	192-204	7 3/4 - 8	180 - 191	7 1/4 - 7 1/2	30.51	25.59	8.27	9.00	15.55	12.01	27.17	64.37	3278

MBL = Minimum Breaking Load

- The standard finish of our sockets is blue. Hot dipped galvanized is also available.
- Socket range CSS 296 until CSS 200 is delivered with galvanized finish, other finishes are available upon request.
- All sockets are provided with an EN 10204-2.1 declaration of conformity, EN 10204-3.1 material certificate and can be provided with a 2006/42/EC declaration where applicable.
- Dimensional tolerances depend on the manufacturing techniques applied and are different between machined components (pins) and cast components (socket bodies and wedges).
- Also surface finish e.g. hot dip galvanizing or even paint may add to the overall thickness and fork distance.
- Please contact Ropeblock for further guidance and a detailed dimensional tolerance sheet.


SEE OUR WARNING & SAFETY INFORMATION