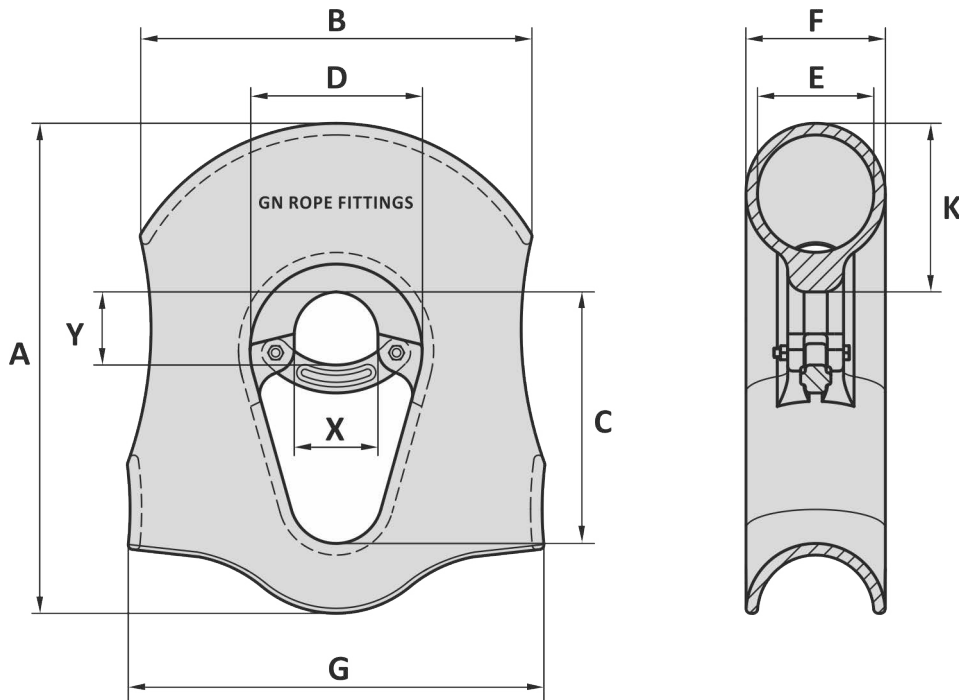


Material : Cast steel
 Stainless steel
 Finish : Galvanized (mild steel)
 Self colored (stainless steel)
 Temperature range : -20°C up to +200°C
 Standard certification : Certificate of Conformity

Suitable for fibre rope
For connecting to a special shackle we can change dimension X and Y on request



| Art. No. steel | Art. No. st. steel | Rope size inch | A mm | B mm | C mm | D mm | E mm | F mm | G mm | K mm | X mm | Y mm | Weight kg |
|----------------|--------------------|----------------|------|------|------|------|------|------|------|------|------|------|-----------|
| 16001113 | 21001113 | 11 - 13 | 530 | 320 | 270 | 175 | 132 | 157 | 477 | 170 | 105 | 105 | 52 |
| 16001415 | 21001415 | 14 - 15 | 655 | 476 | 357 | 258 | 154 | 183 | 598 | 200 | 116 | 124 | 83 |
| 16001618 | 21001618 | 16 - 18 | 795 | 542 | 380 | 283 | 184 | 212 | 721 | 252 | 143 | 143 | 126 |
| 16001921 | 21001921 | 19 - 21 | 940 | 657 | 457 | 348 | 209 | 261 | 880 | 309 | 158 | 177 | 297 |
| 16002224 | 21002224 | 22 - 24 | 1043 | 814 | 575 | 410 | 244 | 298 | 867 | 360 | 180 | 200 | 406 |

Tolerance: Cast parts ± 5%, machined parts ± 1 mm

| Art. No. steel | Art. No. st. steel | Rope size inch | A inch | B inch | C inch | D inch | E inch | F inch | G inch | K inch | X inch | Y inch | Weight lbs |
|----------------|--------------------|----------------|----------|---------|---------|---------|--------|---------|----------|---------|--------|---------|------------|
| 16001113 | 21001113 | 11 - 13 | 20 7/8 | 12 1/2 | 10 5/8 | 6 7/8 | 5 3/16 | 6 3/16 | 18 25/32 | 6 11/16 | 4 1/8 | 4 1/8 | 115 |
| 16001415 | 21001415 | 14 - 15 | 25 25/32 | 18 3/4 | 14 1/16 | 10 9/32 | 6 1/16 | 7 3/16 | 23 9/16 | 7 7/8 | 4 9/16 | 4 7/8 | 183 |
| 16001618 | 21001618 | 16 - 18 | 31 5/16 | 21 1/2 | 14 3/32 | 11 1/8 | 7 1/4 | 8 11/32 | 28 3/8 | 9 15/16 | 5 5/8 | 5 5/8 | 278 |
| 16001921 | 21001921 | 19 - 21 | 37 | 25 7/8 | 18 | 13 1/16 | 8 7/32 | 10 9/32 | 34 21/32 | 12 3/32 | 6 7/32 | 6 31/32 | 655 |
| 16002224 | 21002224 | 22 - 24 | 41 1/16 | 32 1/16 | 22 3/8 | 16 1/8 | 9 5/8 | 11 3/4 | 34 1/4 | 14 3/16 | 7 3/32 | 7 7/8 | 895 |

Tolerance: Cast parts ± 5%, machined parts ± 1/32 inch

18-05-2018