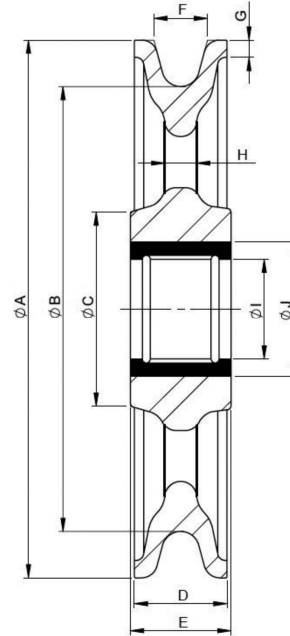


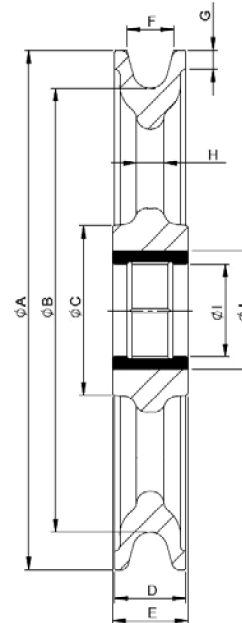
Sheaves





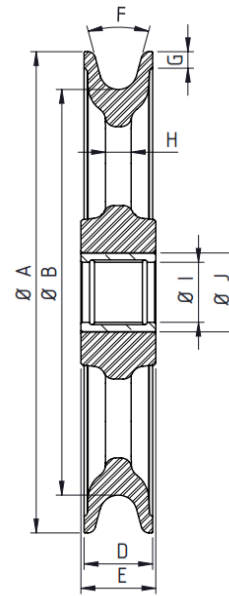
Medium Weight Oval Pattern Construction blocks

Sheave	Wire Rope	ØA	ØB	ØC	D	E	F	G	H	ØI	ØJ
Sheave of SL620B-6S	3/8 - 1/2	6	4.9	3	1.26	1.5	0.75	0.26	0.47	1.5	2
Sheave of SL620B-8S	1/2 - 5/8	8	6.8	3	1.26	1.5	0.79	0.26	0.47	1.5	2
Sheave of SL620B-10S	5/8 - 3/4	10	8.5	3	1.26	1.5	1.02	0.26	0.47	1.5	2

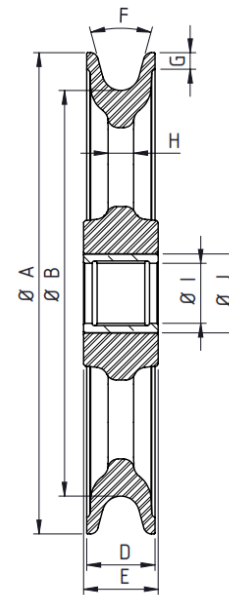


Extra Heavy Oval Pattern Construction blocks

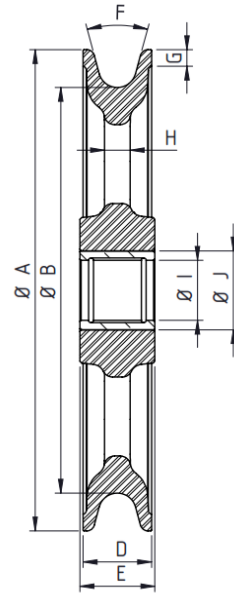
Sheave	Wire Rope	ØA	ØB	ØC	D	E	F	G	H	ØI	ØJ
Sheave of SL640B-8S	5/8 - 3/4	8	5	3.07	1.5	1.62	0.95	0.26	0.52	1.5	2
Sheave of SL640B-10S	5/8 - 7/8	10	8.28	3.74	1.63	1.73	0.95	0.43	0.63	1.93	2.5
Sheave of SL640B-12S	5/8 - 1	12	10.28	3.94	1.63	1.73	1.08	0.43	0.63	2.17	2.76
Sheave of SL640B-14S	3/4 - 1	14	12.21	5	2	2.13	1.25	0.27	0.63	2.72	3.27
Sheave of SL640B-16S	3/4 - 1	16	13.8	6.02	2.3	2.5	1.25	0.35	0.77	2.95	3.5



SHEAVE BB - SERIES SNATCH BLOCK WLL 13.2 US TON											
SHEAVE	WIRE ROPE	ϕA	ϕB	ϕC	D	E	F	G	H	ϕI	ϕJ
Sheave of SL400B-8	3/4- 7/8	8	6.13	3.13	1.75	1.88	30°	0.39	0.7	1.5	2
Sheave of SL400B-10	3/4- 7/8	10	8.18	3.25	1.75	1.88	30°	0.39	0.62	1.5	2
Sheave of SL400B-12	3/4- 7/8	12	10.13	3.62	1.75	1.88	30°	0.39	0.62	1.5	2



SHEAVE BB - SERIES SNATCH BLOCK WLL 16.5 US TON											
SHEAVE	WIRE ROPE	ϕA	ϕB	ϕC	D	E	F	G	H	ϕI	ϕJ
Sheave of SL400B-8	3/4- 7/8	8	6.13	3.62	2.25	2.38	30°	0.39		1.75	2.25
Sheave of SL400B-10	3/4- 7/8	10	8.18	3.62	2.25	2.38	30°	0.39	0.75	1.75	2.25
Sheave of SL400B-12	3/4- 7/8	12	10.13	3.62	2.25	2.38	30°	0.39	0.75	1.75	2.25



SHEAVE BB - SERIES SNATCH BLOCK WLL 22 US TON											
SHEAVE	WIRE ROPE	øA	øB	øC	D	E	F	G	H	øI	øJ
Sheave of SL400B-8	1- 1 1/8	8	5.62	4.17	2.4	2.51	30°	0.39		2.25	2.75
Sheave of SL400B-10	1- 1 1/8	10	7.62	4.25	2.4	2.51	30°	0.39	0.62	2.25	2.75
Sheave of SL400B-12	1- 1 1/8	12	9.62	4.25	2.4	2.51	30°	0.39	0.62	2.25	2.75