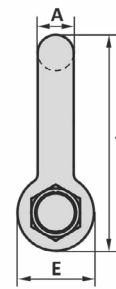
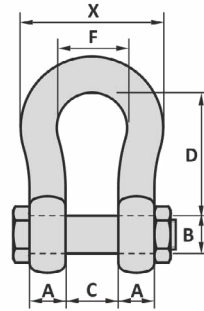


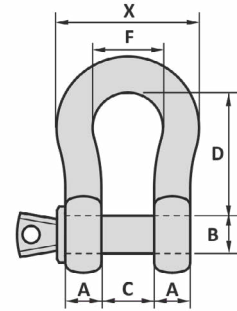
Material : Forged high tensile steel quenched and tempered  
 Safety factor : 6 times  
 Standards : Generally according to US Federal Spec RR-C-271  
 Finish : Galvanized  
 Temperature range : -4°F up to +392°F  
 Standard certification : Certificate of Conformity  
 3.1 material certificate EN 10204



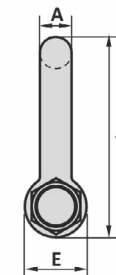
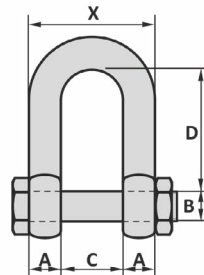
BOW TYPE SAFETY PIN



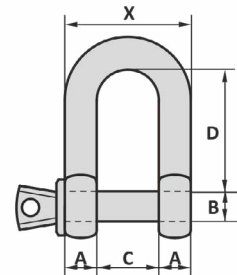
BOW TYPE SCREW PIN



DEE TYPE SAFETY PIN



DEE TYPE SCREW PIN



WLL ton	Art. No.	Art. No.	Art. No.	Art. No.	A inch	B inch	C inch	D inch	D inch	E inch	F inch	X inch	X inch	Y inch	Y inch	Packing pcs	Weight lbs
	Dee screw pin	Dee safety pin	Bow screw pin	Bow safety pin													
0.33	32000003		37000004		3/16	1/4	3/8	3/4	7/8	15/32	5/8	25/32	1 1/2	1 1/16	1 13/32	25	0.04
0.5	32000005		37000006	37000009	5/32	5/16	15/32	7/8	1 1/8	11/16	25/32	1 1/2	1 11/32	1 21/32	1 15/16	25	0.13
0.75	32000007		37000007	37000008	11/32	3/8	9/16	1 1/32	1 1/4	25/32	7/8	1 1/4	1 1/16	1 31/32	2 3/16	25	0.24
1	32000010		37000011	37000017	3/8	7/16	1/2	1 1/4	1 7/16	29/32	1 1/32	1 1/16	1 13/16	2 5/16	2 1/2	25	0.35
1.5	32000015		37000015	37000016	7/16	1/2	3/4	1 7/16	1 11/16	1 1/8	1 1/8	1 1/8	2	2 11/16	2 29/32	25	0.49
2	32000021	32000025	37000020	37000029	9/16	5/8	7/8	1 11/16	2	1 1/32	1 1/4	1 31/32	2 2/32	3 3/16	3 1/2	25	0.93
3.25	32000030	32000039	37000030	37000039	5/8	3/4	1 1/16	2	2 1/2	1 1/16	1 1/16	2 2/16	2 15/16	3 13/16	4 3/16	20	1.6
4.75	32000040	32000049	37000040	37000049	3/4	7/8	1 1/32	2 3/16	3	1 1/16	2	2 23/32	3 1/2	4 13/32	5 1/16	10	2.6
6.5	32000060	32000069	37000060	37000069	7/8	1	1 13/32	2 7/8	3 3/4	2 1/16	2 7/32	3 3/32	4	5 5/32	5 11/16	5	4.0
8.5	32000080	32000089	37000080	37000089	1	1 3/32	1 11/16	3 11/32	3 3/4	2 7/16	2 11/16	3 21/32	4 21/32	6 1/16	6 7/16	5	5.7
9.5	32000090	32000099	37000090	37000099	1 3/32	1 1/4	1 27/32	3 3/16	4 1/4	2 19/32	2 15/16	4 1/16	5 5/32	6 7/16	7 7/32	4	8.2
12	32000120	32000129	37000120	37000129	1 1/4	1 3/8	2	3 11/16	4 11/32	2 27/32	3 1/4	4 17/32	5 25/32	7 7/32	7 29/32	3	11
13.5	32000130	32000139	37000130	37000139	1 3/8	1 1/2	2 1/4	4 17/32	5 1/4	3 5/32	3 5/8	5	6 3/8	8 7/32	8 15/16	14	14
17	32000170	32000179	37000170	37000179	1 1/2	1 21/32	2 3/8	5	5 3/4	3 15/32	3 29/32	5 11/32	6 7/8	9 1/16	9 13/16	18	18
25	32000250	32000259	37000250	37000259	1 25/32	1 31/32	2 29/32	5 7/8	7	4 1/16	4 31/32	6 7/16	8 1/2	10 11/16	11 13/16	31	31
35	32000350	32000359	37000350	37000359	1 31/32	2 1/4	3 1/4	6 3/4	7 3/4	4 3/8	5 1/16	7 7/16	9 3/8	12	13 1/2	44	44
42.5	32000420	32000429	37000420	37000429	2 1/4	2 9/16	3 3/4	7 15/32	8 3/4	5 7/8	6 7/16	8 7/32	10 25/32	13 19/32	14 27/32	62	62
55	32000550	32000559	37000550	37000559	2 9/16	2 3/4	4 1/8	8	10 1/4	5 29/32	7 7/32	9 1/4	12 3/16	14 13/16	17 1/16	88	88
85		32000859		37000859	2 15/16	3 1/4	5	9	12 15/16	6 7/8	7 15/32	10 29/32	13 3/8	16 13/16	20 3/4	137	137

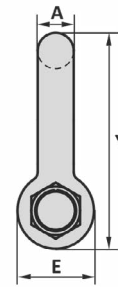
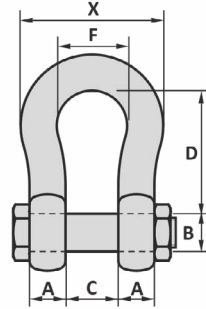
Tolerance: Inside length ± 7.5%, all other forged parts ± 5%, machined parts ± 1/32 inch

04-02-2016

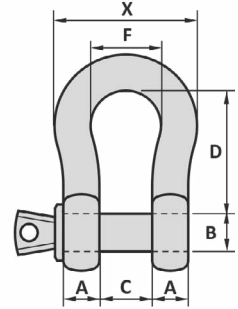
Material : Forged high tensile steel quenched and tempered  
 Safety factor : 6 times  
 Standards : Generally according to US Federal Spec RR-C-271  
 Finish : Galvanized  
 Temperature range : -20°C up to +200°C  
 Standard certification : Certificate of Conformity  
 3.1 material certificate EN 10204



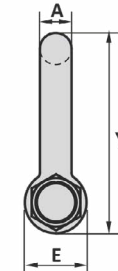
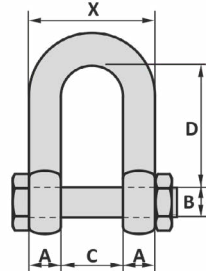
BOW TYPE SAFETY PIN



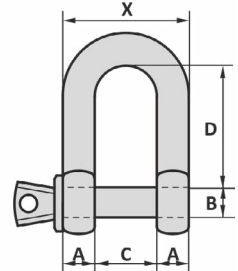
BOW TYPE SCREW PIN



DEE TYPE SAFETY PIN



DEE TYPE SCREW PIN



WLL ton	Art. No. Dee	Art. No. Dee	Art. No. Bow	Art. No. Bow	A mm	B mm	C mm	D mm	D mm	E mm	F mm	X mm	X mm	Y mm	Y mm	Packing pcs	Weight kg
	screw pin	safety pin	screw pin	safety pin													
0.33	32000003		37000004		5	6	10	19	22	12	16	20	26	33	36	25	0.02
0.5	32000005		37000006	37000009	7	8	12	22	29	17	20	26	34	42	49	25	0.06
0.75	32000007		37000007	37000008	9	10	14	26	32	20	22	32	40	50	56	25	0.11
1	32000010		37000011	37000017	10	11	17	32	37	23	26	37	46	59	64	25	0.16
1.5	32000015		37000015	37000016	11	13	19	37	43	27	29	41	51	68	74	25	0.22
2	32000021	32000025	37000020	37000029	14	16	22	43	51	34	32	50	58	81	89	25	0.42
3.25	32000030	32000039	37000030	37000039	16	19	27	51	64	40	43	59	75	97	110	20	0.74
4.75	32000040	32000049	37000040	37000049	19	22	31	59	76	46	51	69	89	112	129	10	1.2
6.5	32000060	32000069	37000060	37000069	22	25	36	73	83	52	58	80	102	134	144	5	1.8
8.5	32000080	32000089	37000080	37000089	25	28	43	85	95	59	68	93	118	154	164	5	2.6
9.5	32000090	32000099	37000090	37000099	28	32	47	90	108	66	75	103	131	167	185	4	3.7
12	32000120	32000129	37000120	37000129	32	35	51	94	115	72	83	115	147	180	201	3	4.9
13.5	32000130	32000139	37000130	37000139	35	38	57	115	133	80	92	127	162	209	227		6.5
17	32000170	32000179	37000170	37000179	38	42	60	127	146	88	99	136	175	230	249		8.2
25	32000250	32000259	37000250	37000259	45	50	74	149	178	103	126	164	216	271	300		14
35	32000350	32000359	37000350	37000359	50	57	83	171	197	111	138	183	238	305	331		20
42.5	32000420	32000429	37000420	37000429	57	65	95	190	222	130	160	209	274	345	377		28
55	32000550	32000559	37000550	37000559	65	70	105	203	260	145	180	235	310	376	433		40
85		32000859		37000859	75	83	127	229	329	162	190	277	340	427	527		62

Tolerance: Inside length ± 7.5%, all other forged parts ± 5%, machined parts ± 1 mm

04-02-2016