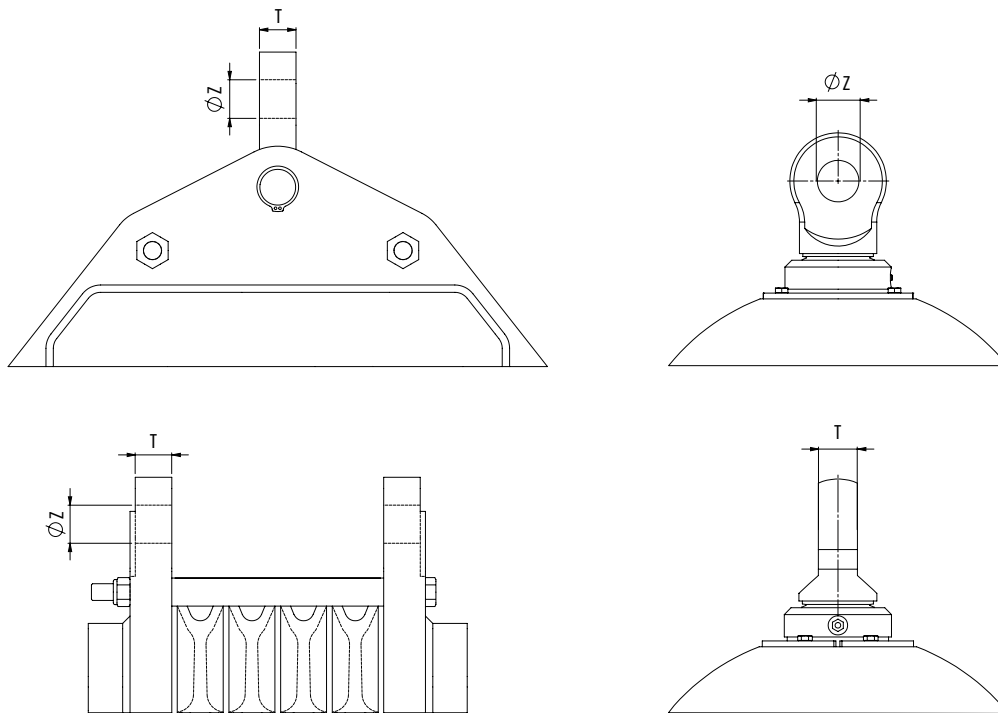


Eye Cap & Dead End Lug (Becket)

Dimensions for Crane Blocks and Overhaul Balls



Wire Rope Size (inch)	Wire Rope Size (mm)	Hole ϕZ (inch)	Hole ϕZ (mm)	Thickness (T) (inch)	Thickness (T) (mm)
$\frac{5}{16}$	7-8	$\frac{1}{16}$	18	$\frac{9}{16}$	15
$\frac{3}{8}$	9-10	$\frac{7}{8}$	22	$\frac{9}{16}$	15
$\frac{1}{2}$	11-13	$1 \frac{1}{16}$	27	$\frac{7}{8}$	22
$\frac{5}{8}$	14-16	$1 \frac{1}{4}$	32	$1 \frac{1}{8}$	28
$\frac{3}{4}$	18-19	$1 \frac{7}{16}$	37	$1 \frac{3}{8}$	35
$\frac{7}{8}$	20-22	$1 \frac{1}{16}$	43	$1 \frac{9}{16}$	40
1	24-26	$2 \frac{1}{16}$	52	$1 \frac{3}{4}$	45
$1 \frac{1}{8}$	27-29	$2 \frac{5}{16}$	59	$1 \frac{15}{16}$	50
$1 \frac{1}{4}$	30-32	$2 \frac{3}{8}$	66	$2 \frac{5}{8}$	60
$1 \frac{3}{8}$	34-36	$2 \frac{3}{8}$	66	$2 \frac{5}{8}$	60

The dimensions in this table are indicative only. A drawing will always be submitted prior to production and will be the leading document when discussing dimensions. Products shown here are standard models; inquiries for custom versions are welcome.