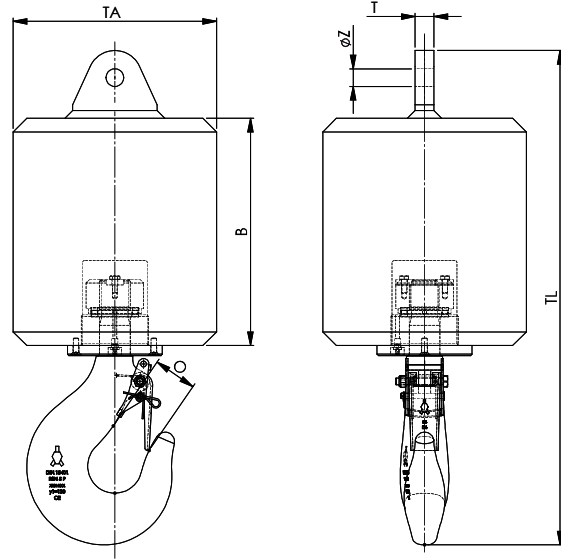


Overhaul Balls



Model Nr.	WLL	For wire ød inch	Becket	Dimensions (inch)						Weight lbs
	UStons			B	O	TA	TL	T	øZ	
OHB 3.2.60.C-1	3.5	½	1	7.9	2.0	8.7	19.7	0.9	1.1	130
OHB 3.2.60.C-2	3.5	⅝ - ⅝	2	7.9	2.0	8.7	19.9	1.1	1.3	130
OHB 5.80.C-2	5.5	⅝ - ⅝	2	8.7	2.0	9.4	22.3	1.1	1.3	175
OHB 6.3.80.C-2	6.9	⅝ - ⅝	2	8.7	2.0	9.4	22.3	1.1	1.3	175
OHB 8.130.C-3	8.8	¾	3	12.2	2.2	10.1	28.3	1.4	1.5	285
OHB 8.170.C-3	8.8	¾	3	13.4	2.2	10.9	26.8	1.4	1.5	375
OHB 8.200.C-3	8.8	¾	3	13.2	2.5	11.8	28.7	1.1	1.0	440
OHB 8.250.C.3	8.8	¾	3	15.7	2.2	12.5	34.0	1.4	1.5	550
OHB 10.210.C-4	11	⅞	4	15.0	2.2	11.7	29.6	1.6	1.7	460
OHB 10.250.C-5	11	1	5	15.7	2.2	12.5	30.4	1.8	2.0	550
OHB 12.328.C-4	13.2	⅞	4	15.8	2.5	13.8	34.6	1.6	1.7	722
OHB 12.5.200.C-4	13.75	⅞	4	13.2	2.5	11.8	31.3	1.6	1.7	440
OHB 12.5.250.C-5	13.75	1	5	15.7	2.5	12.5	32.6	1.8	2.0	550
OHB 12.5.370.C-5	13.75	1	5	17.7	2.5	13.8	34.6	1.8	2.0	814
OHB 16.370.C-5	17.6	1	5	17.7	2.8	12.5	38.7	1.8	2.0	814
OHB 16.450.C-5	17.6	1	5	17.3	2.8	15.7	38.3	1.8	2.0	990
OHB 16.545.P-5	17.6	1	5	18.1	2.8	17.7	39.5	1.8	2.0	1200
OHB 20.575.P-6	22	1⅝	6	18.5	3.1	16.0	42.3	2.0	2.3	1265
OHB 20.725.P-6	22	1⅝	6	24.0	3.1	17.7	47.2	2.0	2.3	1600
OHB 20.910.P-6	22	1⅝	6	24.2	3.1	19.7	47.4	2.0	2.3	2000
OHB 25.725.P-7	27.5	1¾	7	20.1	3.1	18.1	42.4	2.4	2.6	1600
OHB 25.725.P-8	27.5	1¾	8	20.1	3.1	18.1	42.4	2.4	2.6	1600
OHB 25.910.P-7	27.5	1¾	7	24.0	3.1	18.1	46.4	2.4	2.6	2000
OHB 25.910.P-8	27.5	1¾	8	24.0	3.1	18.1	46.4	2.4	2.6	2000
OHB 32.365.P-8	35	1⅝	6	15.7	3.5	14.6	49.6	2.6	2.6	800
OHB 32.725.P-7	35	1¾	7	23.6	3.5	17.7	45.4	2.4	2.6	1600
OHB 32.910.P-9	35	1½	9	24.2	3.5	19.7	46.0	2.8	2.8	2000

Minimum Ultimate Strength = 4 x WLL.

- The dimensions in this table are indicative only. A drawing will always be submitted prior to production and will be the leading document when discussing dimensions.
- Overhaul Balls shown here are standard models; inquiries for custom versions are welcome.

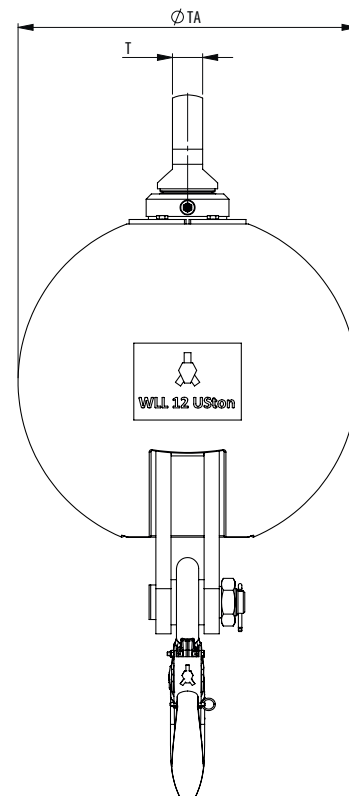
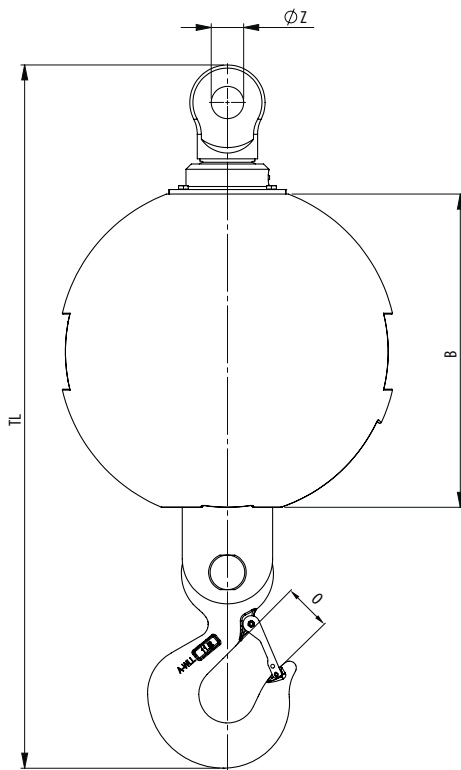


SEE OUR WARNINGS AND APPLICATION INSTRUCTIONS

8125 Saran Dr. • Playa del Rey, CA 90293
 Phone: 310.448.5444 • Fax: 310.448.5446
 sales@awrrinc.com
 www.AssociatedWireRope.com



Round Overhaul Ball NEW!

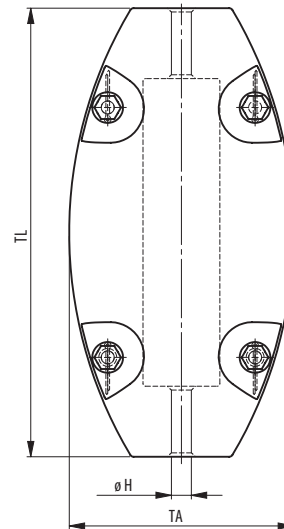
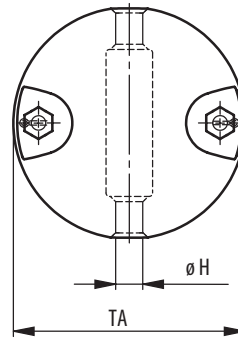


Model no.	WLL (UStons)	For wire ød inch	Dimensions (inch)						Weight (lbs)
			B	O	TA	TL	T	Z	
OHB-B 4,5.50-x	5	1/2 - 3/4	7 13/16	1 11/16	9 1/16	26 1/4	TBD	TBD	110
OHB-B 4,5.110-x	5	1/2 - 3/4	11 3/8	1 11/16	12 5/16	27 7/16	TBD	TBD	242
OHB-B 4,5.145-x	5	1/2 - 3/4	12 9/16	1 11/16	13 9/16	28 15/16	TBD	TBD	320
OHB-B 7.50-x	8	1/2 - 3/4	7 13/16	1 11/16	9 1/16	26 1/4	TBD	TBD	110
OHB-B 7.80-x	8	1/2 - 3/4	10	1 11/16	11	26 1/4	TBD	TBD	175
OHB-B 7.110-x	8	1/2 - 3/4	11 3/8	1 11/16	12 5/16	27 7/16	TBD	TBD	242
OHB-B 7.145-x	8	1/2 - 3/4	12 9/16	1 11/16	13 9/16	28 15/16	TBD	TBD	320
OHB-B 11.180-x	12	3/4 - 1 1/8	13 1/8	2 1/16	14 9/16	33 1/16	TBD	TBD	396
OHB-B 11.265-x	12	3/4 - 1 1/8	15 3/8	2 1/16	16 3/4	35 7/8	TBD	TBD	583
OHB-B 11.320-x	12	3/4 - 1 1/8	16 7/16	2 1/16	17 11/16	36 7/8	TBD	TBD	705
OHB-B 11.530-x	12	3/4 - 1 1/8	20	2 1/16	21 1/16	40 7/16	TBD	TBD	1165
OHB-B 18.195-x	20	3/4 - 1 1/8	13 1/8	3 1/16	14 9/16	38 3/16	TBD	TBD	429
OHB-B 18.330-x	20	3/4 - 1 1/8	16 7/16	3 1/16	17 11/16	42	TBD	TBD	726
OHB-B 18.545-x	20	3/4 - 1 1/8	20	3 1/16	21 1/16	45 9/16	TBD	TBD	1200

The dimensions in this table are indicative only. A drawing will always be submitted prior to production and will be the leading document when discussing dimensions.
Products shown here are standard models; inquiries for custom versions are welcome.

Minimum Ultimate Strength = 4 x WLL

Split Overhaul Balls (Ball weights)



Model No.	Stock No.	Type	Wire Ø (inch)	Dimensions (inch)			Weight (lbs)
				ØH	TA	TL	
SOBA 5.6	52.005.06.00	A	¼	¼	4 ⅝	-	11
SOBA 5.12	52.005.12.00	A	½	½	4 ⅝	-	11
SOBA 8.16	52.008.16.00	A	⅝	⅝	5 ¼	-	18
SOBA 10.12	52.010.12.00	A	½	½	5 ⅞	-	22
SOBA 15.16	52.015.16.00	B	⅝	⅝	5 ⅝	8 ¼	33
SOBA 25.16	52.025.16.00	B	⅝	⅝	5 ⅞	10 ¼	55
SOBA 35.16	52.035.16.00	B	⅝	⅝	6 ⅞	13 ¾	77
SOBA 50.20	52.050.20.00	B	1 ⅜	1 ⅜	7 ⅞	14 ¾	110
SOBA 75.20	52.075.20.00	B	1 ⅜	1 ⅜	10 ⅝	14 ⅞	165
SOBA 100.28	52.100.28.00	B	1 ⅞	1 ⅞	11	15 ¾	220

• Weights can be made suitable for larger wire diameters (at additional costs).