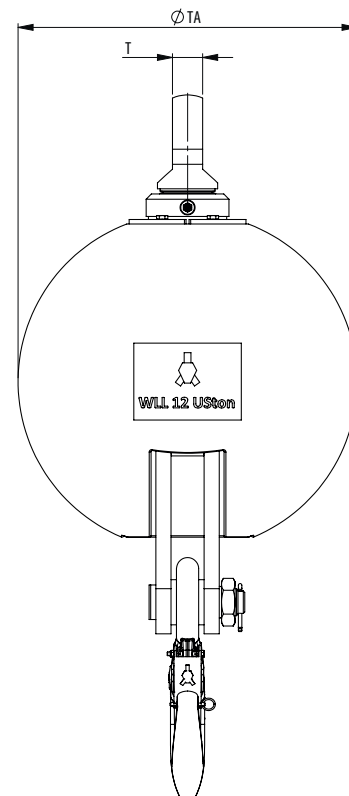
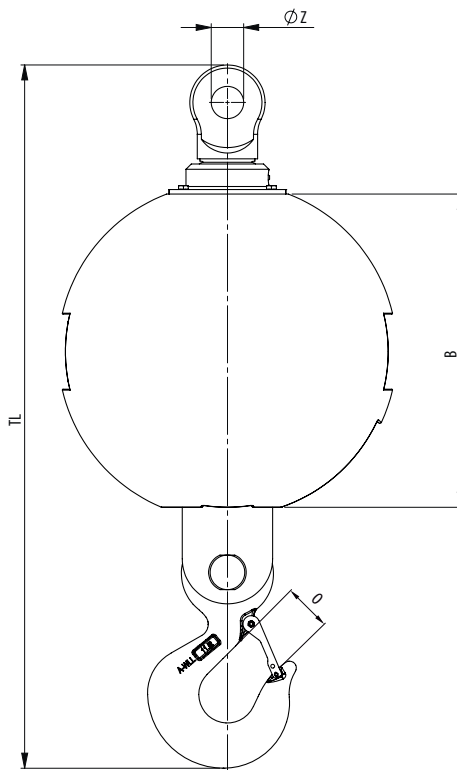


Round Overhaul Ball NEW!

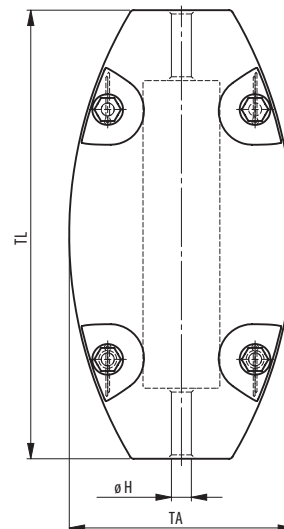
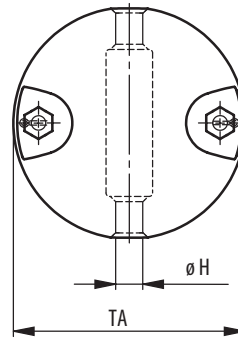


Model no.	WLL (UStons)	For wire ød inch	Dimensions (inch)						Weight (lbs)
			B	O	TA	TL	T	Z	
OHB-B 4,5.50-x	5	1/2 - 3/4	7 13/16	1 11/16	9 1/16	26 1/4	TBD	TBD	110
OHB-B 4,5.110-x	5	1/2 - 3/4	11 3/8	1 11/16	12 5/16	27 7/16	TBD	TBD	242
OHB-B 4,5.145-x	5	1/2 - 3/4	12 9/16	1 11/16	13 9/16	28 15/16	TBD	TBD	320
OHB-B 7.50-x	8	1/2 - 3/4	7 13/16	1 11/16	9 1/16	26 1/4	TBD	TBD	110
OHB-B 7.80-x	8	1/2 - 3/4	10	1 11/16	11	26 1/4	TBD	TBD	175
OHB-B 7.110-x	8	1/2 - 3/4	11 3/8	1 11/16	12 5/16	27 7/16	TBD	TBD	242
OHB-B 7.145-x	8	1/2 - 3/4	12 9/16	1 11/16	13 9/16	28 15/16	TBD	TBD	320
OHB-B 11.180-x	12	3/4 - 1 1/8	13 1/8	2 1/16	14 9/16	33 1/16	TBD	TBD	396
OHB-B 11.265-x	12	3/4 - 1 1/8	15 3/8	2 1/16	16 3/4	35 7/8	TBD	TBD	583
OHB-B 11.320-x	12	3/4 - 1 1/8	16 7/16	2 1/16	17 11/16	36 7/8	TBD	TBD	705
OHB-B 11.530-x	12	3/4 - 1 1/8	20	2 1/16	21 1/16	40 7/16	TBD	TBD	1165
OHB-B 18.195-x	20	3/4 - 1 1/8	13 1/8	3 1/16	14 9/16	38 3/16	TBD	TBD	429
OHB-B 18.330-x	20	3/4 - 1 1/8	16 7/16	3 1/16	17 11/16	42	TBD	TBD	726
OHB-B 18.545-x	20	3/4 - 1 1/8	20	3 1/16	21 1/16	45 9/16	TBD	TBD	1200

The dimensions in this table are indicative only. A drawing will always be submitted prior to production and will be the leading document when discussing dimensions.
Products shown here are standard models; inquiries for custom versions are welcome.

Minimum Ultimate Strength = 4 x WLL

Split Overhaul Balls (Ball weights)



Model No.	Stock No.	Type	Wire Ø (inch)	Dimensions (inch)			Weight (lbs)
				ØH	TA	TL	
SOBA 5.6	52.005.06.00	A	¼	¼	4 ⅝	-	11
SOBA 5.12	52.005.12.00	A	½	½	4 ⅝	-	11
SOBA 8.16	52.008.16.00	A	⅝	⅝	5 ¼	-	18
SOBA 10.12	52.010.12.00	A	½	½	5 ⅞	-	22
SOBA 15.16	52.015.16.00	B	⅝	⅝	5 ⅝	8 ¼	33
SOBA 25.16	52.025.16.00	B	⅝	⅝	5 ⅞	10 ¼	55
SOBA 35.16	52.035.16.00	B	⅝	⅝	6 ⅞	13 ¾	77
SOBA 50.20	52.050.20.00	B	1 ⅜	1 ⅜	7 ⅞	14 ¾	110
SOBA 75.20	52.075.20.00	B	1 ⅜	1 ⅜	10 ⅝	14 ⅞	165
SOBA 100.28	52.100.28.00	B	1 ⅞	1 ⅞	11	15 ¾	220

• Weights can be made suitable for larger wire diameters (at additional costs).