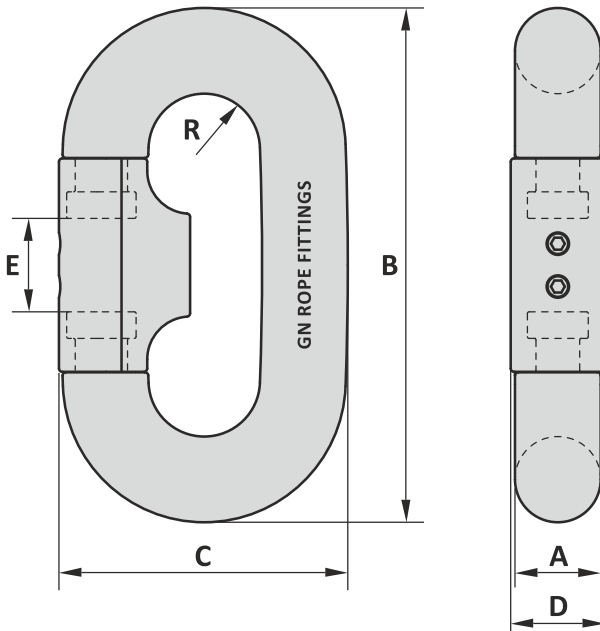


INSTALLATION LINK

TYPE SC10

Material : Forged steel R3/R3S/R4/R4S/R5
 Finish : Painted
 Temperature range : -40°C up to +200°C; Polar Rated
 Standard certification : Certificate of Conformity
 3.1 material certificate EN 10204

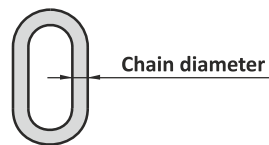
Non-standard sizes or custom products available on request



Dimensions for links are calculated by multiplying the common link size by the factor shown in this drawing.

Dimensions related to nominal chain diameter

A = 1.00 x chain diameter
 B = 6.00 x chain diameter
 C = 3.37 x chain diameter
 D = 1.10 x chain diameter
 E = 1.09 x chain diameter
 R = 0.65 x chain diameter



Tolerance: Machined parts ± 1 mm

GN ROPE FITTINGS

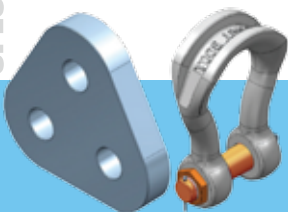
North American Stocking Distributor

8125 Saran Dr. • Playa del Rey, CA 90293

Phone: 310.448.5444 • Fax: 310.448.5446

sales@awrrinc.com

www.AssociatedWireRope.com



INSTALLATION LINK

TYPE SC10

GENERAL

SHACKLES

THIMBLES

SOCKETS

LINKS

SWIVELS

HOOKS

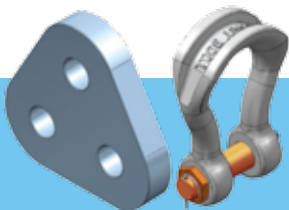
MOORING

SPECIALS



GN ROPE FITTINGS

North American Stocking Distributor



8125 Saran Dr. • Playa del Rey, CA 90293
Phone: 310.448.5444 • Fax: 310.448.5446
sales@awrrinc.com
www.AssociatedWireRope.com

