

Aluminum Snatch Block

Size	Working Load Limit (lbs.)	Sheave Diameter (in.)	Wire Rope (in.)	Weight (lbs.)
4	1000	4	1/4	5.5



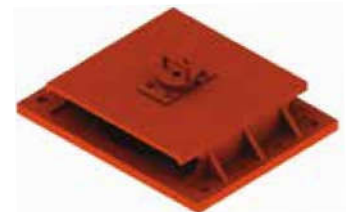
PJ Style Snatch Block

Size	Working Load Limit (lbs.)	Sheave Diameter (in.)	Wire Rope (in.)	Weight (lbs.)
10	6600	6	1/2 - 5/8	23
12	11000	7 5/7	5/8 - 3/4	40



Horizontal Sheave Lead Block

Size	Working Load Limit (lbs.)	Sheave Diameter (in.)	Wire Rope (in.)	Weight (lbs.)
8	22000	8	1	79
14	44000	14	1 1/4	209



Vertical Sheave Lead Block

Size	Sheave Diameter (in.)	Wire Rope (in.)	Weight (lbs.)
14	14	7/8	174
20	20	1	330
24	24	1 1/4	524
26	26	1 1/2	587



- Blocks built to 4:1 Design Factor.
- Larger sizes available upon request.
- The dimensions in this table are indicative only.
- Blocks shown here are standard models.
- Custom models available.

See our warnings & application instructions

Diamond Steel Shell Wire Rope Block

Size	Working Load Limit (lbs.)			Sheave Diameter (in.)	Wire Rope (in.)
	Single	Double	Triple		
6	4400	5500	6600	6	3/8
8	5500	7700	9900	8	1/2 - 5/8
10	6600	9900	13200	10	1/2 - 5/8
12	11000	22000	26600	12	3/4



Extra Heavy Diamond Steel Shell Wire Rope Block

Size	Working Load Limit (lbs.)			Sheave Diameter (in.)	Wire Rope (in.)
	Single	Double	Triple		
8	16500	22000	22000	8	1/2 - 5/8
10	22000	33000	44000	10	5/8 - 3/4
12	22000	33000	44000	12	5/8 - 3/4
14	22000	44000	88000	14	3/4 - 7/8



Reel Type Snatch Block

Size	Working Load Limit (lbs.)	Sheave Diameter (in.)	Wire Rope (in.)	Weight (lbs.)
18	66000	14	3/4	301
20	88000	16	1	343



Trawl Block

Size	Working Load Limit (lbs.)	Sheave Diameter (in.)	Weight (lbs.)
12	22000	12	90
16	44000	15 7/8	172

