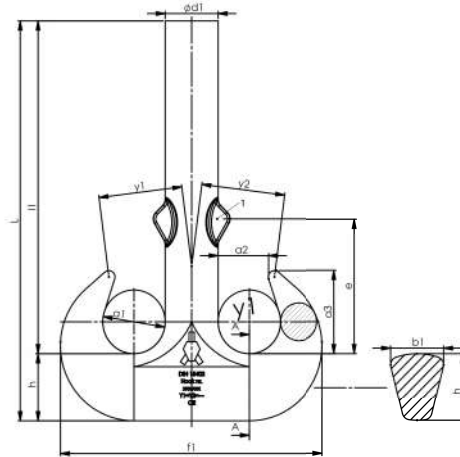


# Double Hook



Hook No.	Lifting Capacity US tons V-Class Hook	Lifting Capacity Metric tons V-Class Hook	Lifting Capacity US tons T-Class Hook	Lifting Capacity Metric tons T-Class Hook	Lifting Capacity US tons P-Class Hook	Lifting Capacity Metric tons P-Class Hook	Dimensions (inch)											Weight (kg)	Weight (lbs)
							a1	a2	a3	b1	d1	e	f1	h	L	l1	y1 = y2		
1,6	8.8	8	6,93	6,3	4,4	4	1.77	1.42	2.32	1.34	1.42	3.94	7.20	1.69	10.43	8.74	2.36	5	12
2,5	13.75	12.5	11	10	6.93	6,3	1.97	1.57	2.56	1.57	1.65	4.41	8.19	1.97	11.81	9.84	2.56	7	15
4	22	20	17.6	16	11	10	2.20	1.77	2.87	1.89	1.89	4.88	9.37	2.36	15.35	12.99	3.66	10	22
5	27.5	25	22	20	13.75	12,5	2.48	1.97	3.23	2.09	2.09	5.63	10.47	2.64	14.65	12.01	3.66	13	28
6	35.2	32	27,5	25	17.6	16	2.80	2.20	3.62	2.36	2.36	6.30	11.85	2.95	19.88	16.93	3.66	18	39
8	44	40	35,2	32	22	20	3.15	2.48	4.06	2.64	2.64	7.17	13.27	3.35	21.06	17.72	4.11	26	58
10	55	50	44	40	27.5	25	3.54	2.80	4.57	2.95	2.95	7.56	14.84	3.74	23.03	19.29	4.63	35	77
12	69.3	63	55	50	35.2	32	3.94	3.15	5.12	3.35	3.35	8.27	16.57	4.17	24.25	20.08	5.22	49	108
16	88	80	69.3	63	44	40	4.41	3.54	5.75	3.74	3.74	9.33	18.54	4.65	28.27	23.62	5.85	60	132
20	110	100	88	80	55	50	4.92	3.94	6.42	4.17	4.17	10.43	20.91	5.20	33.54	28.35	6.52	97	214
25	137.5	125	110	100	69.3	63	5.51	4.41	7.17	4.65	4.65	12.40	23.54	5.91	39.37	33.46	7.28	135	298
32	176	160	137.5	125	88	80	6.30	4.92	8.07	5.20	5.20	13.19	26.46	6.69	40.16	33.46	8.15	193	425
40	220	200	176	160	110	100	7.09	5.51	9.06	5.91	5.91	14.76	29.69	7.48	47.83	40.35	9.17	280	617
50	275	250	220	200	137.5	125	7.87	6.30	10.24	6.69	6.69	16.54	33.15	8.35	51.65	43.31	10.43	338	745
63	352	320	275	250	176	160	8.82	7.09	11.50	7.48	7.48	18.11	37.17	9.29	56.54	47.24	11.69	539	1188
80	440	400	352	320	220	200	9.84	7.87	12.80	8.35	8.35	20.28	41.81	10.43	59.65	49.21	13.03	760	1676
100	550	500	440	400	275	250	11.02	8.82	14.33	9.29	9.29	22.64	46.69	11.81	67.91	56.10	14.57	1100	2425
125	693	630	550	500	352	320	12.40	9.84	16.06	10.43	10.43	25.39	52.36	13.19	74.21	61.02	16.32	1491	3287
160	880	800	693	630	440	400	13.98	11.02	18.03	11.81	11.81	28.54	59.25	14.76	83.46	68.70	18.35	2115	4663
200	1100	1000	880	800	550	500	15.75	12.40	20.28	13.19	13.19	31.50	66.34	16.73	95.39	78.66	20.7	3015	6647
250	1375	1250	1100	1000	693	630	17.72	13.98	22.83	14.76	14.76	34.45	74.21	18.70	107.28	88.58	23.13	4268	9409

- Hooks shown here are standard models; inquiries for custom versions are welcome.
- Lifting capacity determined according to crane group 1Bm as specified in DIN 15400.



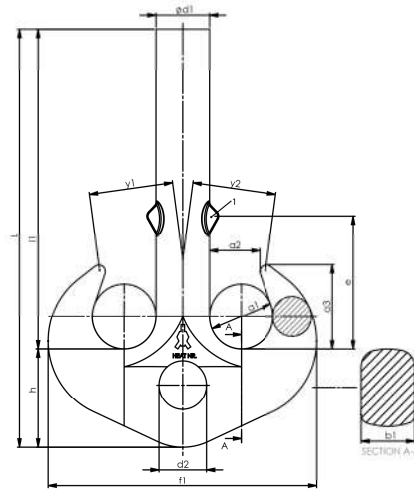
**SEE OUR WARNINGS AND APPLICATION INSTRUCTIONS**

8125 Saran Dr. • Playa del Rey, CA 90293  
 Phone: 310.448.5444 • Fax: 310.448.5446  
 sales@awrrinc.com  
 www.AssociatedWireRope.com



# Double Hook with shackle hole

form B



Hook No.	Lifting Capacity US tons V-Class Hook	Lifting Capacity Metric tons V-Class Hook	Lifting Capacity US tons T-Class Hook	Lifting Capacity Metric tons T-Class Hook	Lifting Capacity US tons P-Class Hook	Lifting Capacity Metric tons P-Class Hook	Dimensions (inch)													Weight (kg)	Weight (lbs)
							a1	a2	a3	b1	d1	d2 (H15)	e	f1	h	L	l1	y1 = y2			
8	44	40	35,2	32	22	20	3.15	2.48	4.06	2.64	2.64	2.91	7.17	13.27	4.72	21.06	16.34	4.11	30	66	
10	55	50	44	40	27.5	25	3.54	2.80	4.57	2.95	2.95	2.91	7.56	14.84	5.12	22.83	17.72	4.63	41	90	
12	69.3	63	55	50	35.2	32	3.94	3.15	5.12	3.35	3.35	3.07	8.27	16.57	5.91	25.98	20.08	5.22	57	126	
16	88	80	69.3	63	44	40	4.41	3.54	5.75	3.74	3.74	3.39	9.33	18.54	6.69	29.53	22.83	5.85	82	181	
20	110	100	88	80	55	50	4.92	3.94	6.42	4.17	4.17	3.78	10.43	20.91	7.48	33.07	25.59	6.52	115	254	
25	137.5	125	110	100	69.3	63	5.51	4.41	7.17	4.65	4.65	4.17	12.40	23.54	8.35	36.50	28.15	7.28	160	353	
32	176	160	137.5	125	88	80	6.30	4.92	8.07	5.20	5.20	4.57	13.19	26.46	9.29	40.39	31.10	8.15	229	505	
40	220	200	176	160	110	100	7.09	5.51	9.06	5.91	5.91	5.16	14.76	29.69	10.43	45.28	34.84	9.17	330	728	
50	275	250	220	200	137.5	125	7.87	6.30	10.24	6.69	6.69	5.75	16.54	33.15	11.81	49.80	37.99	10.43	458	1010	
63	352	320	275	250	176	160	8.82	7.09	11.50	7.48	7.48	6.61	18.11	37.17	13.19	56.10	42.91	11.69	638	1407	
80	440	400	352	320	220	200	9.84	7.87	12.80	8.35	8.35	7.40	20.28	41.81	14.76	63.39	48.62	13.03	892	1967	
100	550	500	440	400	275	250	11.02	8.82	14.33	9.29	9.29	8.19	22.64	46.69	16.73	70.87	54.13	14.57	1248	2751	
125	693	630	550	500	352	320	12.40	9.84	16.06	10.43	10.43	9.25	25.39	52.36	18.70	79.72	61.02	16.32	1757	3874	
160	880	800	693	630	440	400	13.98	11.02	18.03	11.81	11.81	10.24	28.54	59.25	20.87	89.57	68.70	18.35	2500	5512	
200	1100	1000	880	800	550	500	15.75	12.40	20.28	13.19	13.19	11.10	31.50	66.34	23.62	100.79	77.17	20.57	3560	7848	
250	1375	1250	1100	1000	693	630	17.72	13.98	22.83	14.76	14.76	12.28	34.45	74.21	26.38	113.39	87.01	23.13	5033	11096	

- Hooks shown here are standard models; inquiries for custom versions are welcome.
- Lifting capacity determined according to crane group 1Bm as specified in DIN 15400.



**SEE OUR WARNINGS AND APPLICATION INSTRUCTIONS**

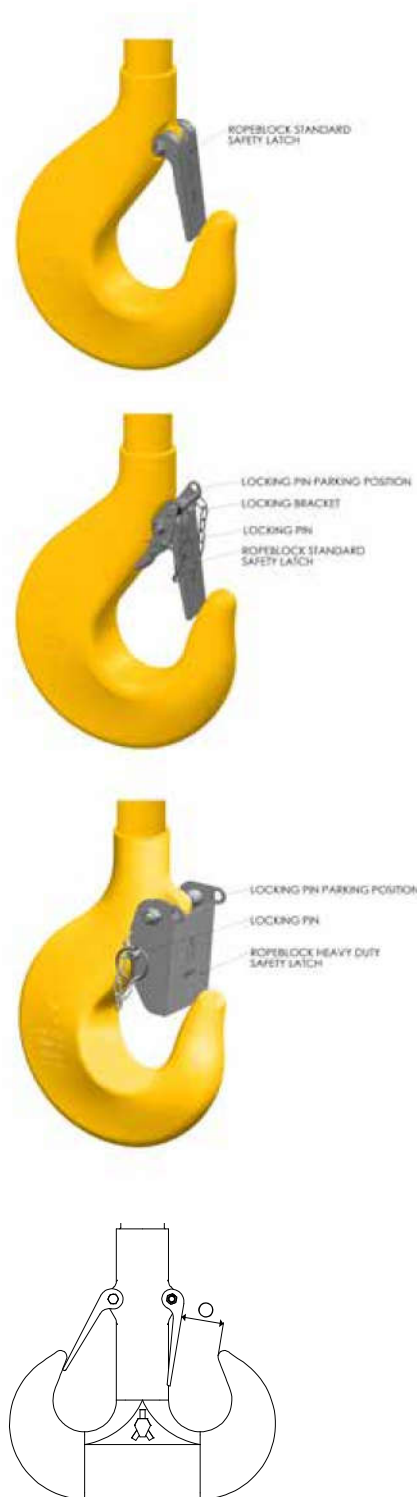
8125 Saran Dr. • Playa del Rey, CA 90293  
 Phone: 310.448.5444 • Fax: 310.448.5446  
 sales@awrrinc.com  
 www.AssociatedWireRope.com



# Latches

Single Hook	Standard hook latch	Standard hook latch with locking pin	Heavy duty hook latch with locking pin	Dimensions (inch)
				O
1,6	64.1,6.E	on request	on request	1.57
2,5	64.2,5.E	on request	64.2,5.E.B	1.61
4	64.4.E	on request	64.4.E.B	1.93
5	64.5.E	64.5.E.F	64.5.E.B	2.17
6	64.6.E	64.6.E.F	64.6.E.B	2.24
8	64.8.E	64.8.E.F	64.8.E.B	2.72
10	64.10.E	64.10.E.F	64.10.E.B	2.99
12	64.12.E	64.12.E.F	64.12.E.B	3.31
16	64.16.E	64.16.E.F	64.16.E.B	3.82
20	64.20.E	64.20.E.F	64.20.E.B	4.33
25	64.25.E	64.25.E.F	64.25.E.B	5.2
32	64.32.E	64.32.E.F	64.32.E.B	5.39
40	64.40.E	64.40.E.F	64.40.E.B	6.57
50	64.50.E	64.50.E.F	64.50.E.B	7.4
63	64.63.E	64.63.E.F	64.63.E.B	8.07
80	64.80.E	on request	64.80.E.B	8.98
100	64.100.E	on request	64.100.E.B	10.03
125	64.125.E	on request	on request	11.41
160	64.160.E	on request	on request	13.34
200	64.200.E	on request	on request	14.81
250	64.250.E	on request	on request	16.53

Double Hook (incl. form b)	Standard hook latch	Standard hook latch with locking pin	Heavy duty hook latch with locking pin	Dimensions (inch)
				O
2,5	64.1,6.E	on request	on request	1.18
4	64.2,5.E	on request	64.2,5.E.B	1.22
5	64.4.E	64.5.D.F	64.4.E.B	1.5
6	64.5.E	64.6.D.F	64.5.E.B	1.89
8	64.6.E	64.8.D.F	64.6.E.B	1.85
10	64.8.E	64.10.D.F	64.8.E.B	2.24
12	64.10.E	64.12.D.F	64.10.E.B	2.36
16	64.12.E	64.16.D.F	64.12.E.B	2.48
20	64.16.E	64.20.D.F	64.16.E.B	2.87
25	64.20.E	64.25.D.F	64.20.E.B	3.43
32	64.25.E	64.32.D.F	64.25.E.B	4.25
40	64.32.E	64.40.D.F	64.32.E.B	4.41
50	64.40.E	64.50.D.F	64.40.E.B	5.12
63	64.50.E	64.63.D.F	64.50.E.B	5.75
80	64.63.E	64.80.D.F	64.63.E.B	6.54
100	64.80.E	64.100.D.F	64.80.E.B	7.48
125	64.100.E	on request	64.100.E.B	8.46
160	64.125.E	on request	on request	9.65
200	64.160.E	on request	on request	11.38
250	64.200.E	on request	on request	12.51



Ropeblock latches are zinc plated and are also available in stainless steel.



**SEE OUR WARNINGS AND APPLICATION INSTRUCTIONS**

8125 Saran Dr. • Playa del Rey, CA 90293  
Phone: 310.448.5444 • Fax: 310.448.5446  
sales@awrrinc.com  
www.AssociatedWireRope.com



# Components

## Swivels

Ropeblock swivels may be used in applications where wire rope twist needs to be released. Some of the key features:

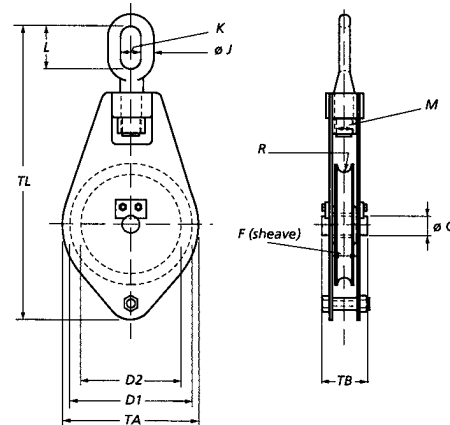
- Closed body design
- Low weight design
- High capacity, low friction thrust bearings
- Wide variety of interfacing connections
- Subsea capabilities optional
- Proofloaded and serialized
- Finish depending on specific requirements



# Samson Wire Rope Blocks

## 1 sheave

Can also be delivered with:



Stock No.	WLL (t)	Wire up to (mm)	No of Sheav.	Dimensions (mm)												Weight (kg)
				D1	D2	F	ØG	ØJ	K	L	M	R	TA	TB	TL	
11.100.00.10	0.75	8	1	100	80	20	15	12	21	48	16	4.5	110	45	275	2
11.125.01.10	1	10	1	125	105	27	22	16	26	58	18	5.5	135	52	336	3
11.150.02.10	2	12	1	150	120	40	30	16	26	58	24	6.5	170	74	407	6
11.200.03.10	3	14	1	200	165	40	30	21	32	72	30	7.5	220	74	500	10
11.250.04.10	4	18	1	250	210	45	35	26	40	94	33	9.5	270	81	608	18
11.300.06.10	6	20	1	300	255	50	40	29	45	108	42	11	320	88	706	27
11.350.08.10	8	22	1	350	305	50	45	32	49	114	45	12	380	92	778	44
11.350.10.10	10	22	1	350	305	60	50	36	54	125	52	12	380	110	795	50
11.400.10.10	10	24	1	400	345	60	50	36	54	125	52	13	430	110	848	60
11.350.12.10	12	22	1	350	305	60	50	41	60	144	56	12	380	114	821	59
11.400.12.10	12	24	1	400	345	60	60	41	60	144	56	13	430	118	926	75
11.350.16.10	16	22	1	350	305	60	50	46	66	163	64	12	380	114	879	69
11.400.16.10	16	24	1	400	345	60	60	46	66	163	64	13	430	118	959	81
11.400.20.10	20	24	1	400	345	60	60	51	72	173	72	13	430	118	990	97
11.450.20.10	20	28	1	450	390	70	70	51	72	173	72	15	480	128	1046	109
11.450.25.10	25	28	1	450	390	70	70	60	80	195	76	15	480	128	1105	130
11.450.30.10	30	36	1	450	390	70	70	60	90	220	80	19.5	480	134	1145	150

Minimum Ultimate Strength = 4 x WLL.

WLL= Working Load Limit on head fitting.

- All blocks up to 30 tons are standard supplied with swivel oval eye, for over 30 tons with swivel stud eye.
- All blocks can be supplied with swivel hook, swivel stud eye or swivel jaw.
- For ordering wire rope blocks with becket, the last digit of the stock number should be 1 (instead of 0).
- Standard supplied with bronze bearings. • Other bearings available on request.
- Groove in sheave may be adjusted to other wire rope diameters.



**SEE OUR WARNINGS AND APPLICATION INSTRUCTIONS**

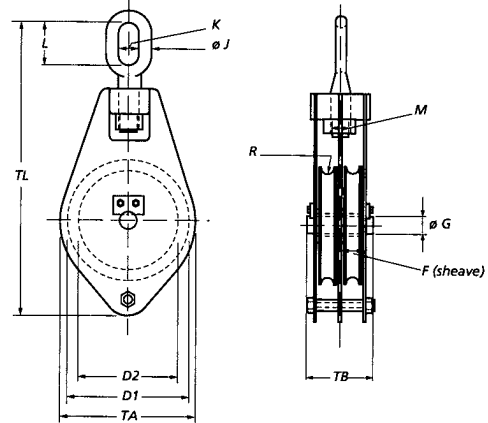
8125 Saran Dr. • Playa del Rey, CA 90293  
 Phone: 310.448.5444 • Fax: 310.448.5446  
 sales@awrrinc.com  
 www.AssociatedWireRope.com



# Samson Wire Rope Blocks

## 2 sheaves

Can also be delivered with:



Stock No.	WLL (t)	Wire up to (mm)	No of Sheav.	Dimensions (mm)												Weight (kg)
				D1	D2	F	ØG	ØJ	K	L	M	R	TA	TB	TL	
11.100.01.20	1	8	2	100	80	20	15	16	26	58	18	4.5	110	70	295	4
11.125.02.20	1.5	10	2	125	105	27	22	16	26	58	24	5.5	135	85	336	6
11.150.03.20	3	12	2	150	120	40	30	21	32	72	30	6.5	170	120	430	11
11.200.04.20	4	14	2	200	165	40	30	26	40	94	33	7.5	220	120	538	18
11.250.06.20	6	18	2	250	210	45	35	29	45	108	42	9.5	270	133	624	32
11.300.08.20	8	20	2	300	255	50	40	32	49	114	45	11	320	146	713	43
11.350.10.20	10	22	2	350	305	50	45	36	54	125	52	12	380	152	569	74
11.350.12.20	12	22	2	350	305	60	50	41	60	144	56	12	380	186	821	81
11.400.12.20	12	24	2	400	345	60	50	41	60	144	56	13	430	180	893	102
11.350.16.20	16	22	2	350	305	60	50	46	66	163	64	12	380	186	879	98
11.400.16.20	16	24	2	400	345	60	60	46	66	163	64	13	430	192	959	126
11.350.20.20	20	22	2	350	305	60	50	51	72	173	72	12	380	186	896	116
11.400.20.20	20	24	2	400	345	60	60	51	72	173	72	13	430	192	976	146
11.400.25.20	25	24	2	400	345	60	60	60	80	195	76	13	430	192	1065	169
11.450.25.20	25	28	2	450	390	70	70	60	80	195	76	15	480	221	1120	190
11.400.30.20	30	24	2	400	345	60	60	60	90	220	80	13	430	192	1095	184
11.450.30.20	30	28	2	450	390	70	70	60	90	220	80	15	480	236	1150	204
11.450.40.20	40	28	2	450	390	70	70	-	96	96	90	15	480	236	1030	225

Minimum Ultimate Strength = 4 x WLL.

WLL= Working Load Limit on head fitting.

- All blocks up to 30 tons are standard supplied with swivel oval eye, for over 30 tons with swivel stud eye.
- All blocks can be supplied with swivel hook, swivel stud eye or swivel jaw.
- For ordering wire rope blocks with becket, the last digit of the stock number should be 1 (instead of 0).
- Standard supplied with bronze bearings. • Other bearings available on request.
- Groove in sheave may be adjusted to other wire rope diameters.



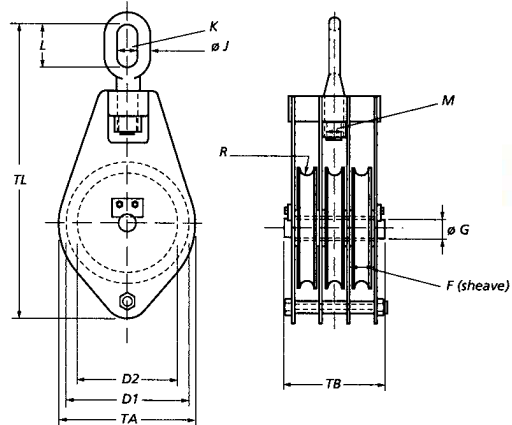
**SEE OUR WARNINGS AND APPLICATION INSTRUCTIONS**

8125 Saran Dr. • Playa del Rey, CA 90293  
 Phone: 310.448.5444 • Fax: 310.448.5446  
 sales@awrrinc.com  
 www.AssociatedWireRope.com



# Samson Wire Rope Blocks 3 sheaves

Can also be delivered with:



Stock No.	WLL (t)	Wire up to (mm)	No of Sheav.	Dimensions (mm)												Weight (kg)
				D1	D2	F	ØG	ØJ	K	L	M	R	TA	TB	TL	
11.125.02.30	2	10	3	125	105	27	22	16	26	58	24	5.5	135	120	336	9
11.150.04.30	4	12	3	150	120	40	30	26	40	94	33	6.5	170	166	468	17
11.200.06.30	6	14	3	200	165	40	30	29	45	108	42	7.5	220	166	556	28
11.250.08.30	8	18	3	250	210	45	35	32	49	114	45	9.5	270	185	633	46
11.300.10.30	10	20	3	300	255	50	40	36	54	125	52	11	320	204	733	69
11.350.12.30	12	22	3	350	305	50	45	41	60	144	56	12	380	212	823	99
11.350.16.30	16	24	3	350	305	60	50	46	66	163	64	13	380	258	880	120
11.400.16.30	16	24	3	400	345	60	50	46	66	163	64	13	430	250	927	157
11.350.20.30	20	24	3	350	305	60	50	51	72	173	72	13	380	258	896	143
11.400.20.30	20	24	3	400	345	60	60	51	72	173	72	13	430	266	1006	184
11.350.25.30	25	24	3	350	305	60	50	60	80	195	76	13	380	266	955	170
11.400.25.30	25	24	3	400	345	60	60	60	80	195	76	13	430	266	1065	198
11.450.25.30	25	28	3	450	390	70	70	60	80	195	76	15	480	296	1120	220
11.400.30.30	30	28	3	400	345	60	60	60	90	220	80	15	430	266	1095	215
11.450.30.30	30	28	3	450	390	70	70	60	90	220	80	15	480	296	1140	255
11.400.40.30	40	28	3	400	345	60	60	-	96	96	90	15	430	278	945	250
11.450.40.30	40	28	3	450	390	70	70	-	96	96	90	15	480	308	1030	295
11.450.50.30	50	28	3	450	390	70	75	-	106	106	100	15	480	338	1055	335

Minimum Ultimate Strength = 4 x WLL.

WLL= Working Load Limit on head fitting.

- All blocks up to 30 tons are standard supplied with swivel oval eye, for over 30 tons with swivel stud eye.
- All blocks can be supplied with swivel hook, swivel stud eye or swivel jaw.
- For ordering wire rope blocks with becket, the last digit of the stock number should be 1 (instead of 0).
- Standard supplied with bronze bearings. • Other bearings available on request.
- Groove in sheave may be adjusted to other wire rope diameters.



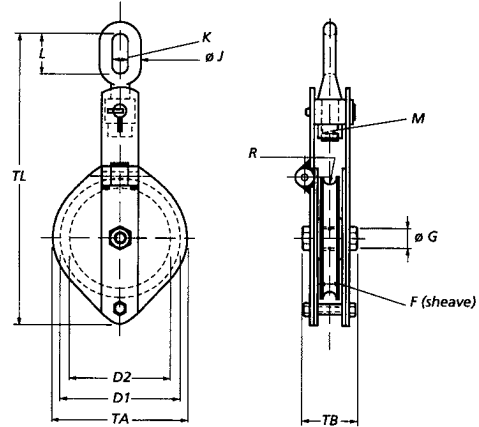
**SEE OUR WARNINGS AND APPLICATION INSTRUCTIONS**

8125 Saran Dr. • Playa del Rey, CA 90293  
Phone: 310.448.5444 • Fax: 310.448.5446  
sales@awrrinc.com  
www.AssociatedWireRope.com



# Snatch Blocks Self Locking

Can also be delivered with:



Stock No.	WLL (t)	Wire up to (mm)	Dimensions (mm)											Weight (kg)	
			D1	D2	F	ØG	ØJ	K	L	M	R	TA	TB		TL
12.125.01.10	1	10	125	105	27	22	16	26	58	18	5.5	135	80	316	4.5
12.150.02.10	2	12	150	120	40	30	16	26	58	24	6.5	170	100	391	8
12.200.03.10	3	14	200	165	40	30	21	32	72	30	7.5	220	100	483	12.5
12.250.04.10	4	18	250	210	45	35	26	40	94	33	9.5	270	110	614	21
12.300.06.10	6	20	300	255	50	40	29	45	108	42	11	320	125	698	33
12.350.08.10	8	22	350	305	60	45	32	49	115	45	12	380	150	777	48
12.400.10.10	10	24	400	345	65	50	36	54	125	52	13	430	170	870	68
12.400.12.10	12	24	400	345	65	55	41	60	144	56	13	430	170	896	83
12.400.16.10	16	28	400	345	70	60	46	66	163	64	15	430	180	950	95
12.450.16.10	16	30	450	390	70	70	46	66	163	64	16	480	180	980	106
12.400.20.10	20	30	400	345	70	70	51	72	173	72	16	430	200	990	122
12.450.20.10	20	32	450	390	70	70	51	72	173	72	17	480	200	1020	130
12.450.25.10	25	36	450	390	80	80	60	80	195	76	19.5	480	224	1045	150
12.450.30.10	30	36	450	390	85	90	60	90	220	80	19.5	480	227	1220	190
12.550.40.13	40	42	550	495	115	120	-	96	96	90	22.5	580	240	1140	250

Minimum Ultimate Strength = 4 x WLL.

WLL= Working Load Limit on head fitting.

- Snatch blocks can be supplied with becket, the last digit of the stock number should be 1 (instead of 0).
- Standard supplied with bronze bearings. • Other bearings available on request.
- Standard supplied with swivel oval eye up to 30 tons, for over 30 tons with swivel stud eye.
- Snatch blocks of 1 ton and over 30 tons are provided with a fixed trunnion and locking pin.
- Snatch blocks can be supplied with swivel hook, swivel stud eye or swivel jaw.
- Groove in sheave may be adjusted to other wire rope diameters.

**WARNING!** These snatch blocks should never be used as lower block for hoisting.