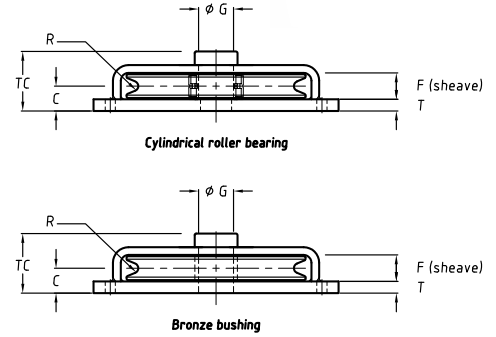
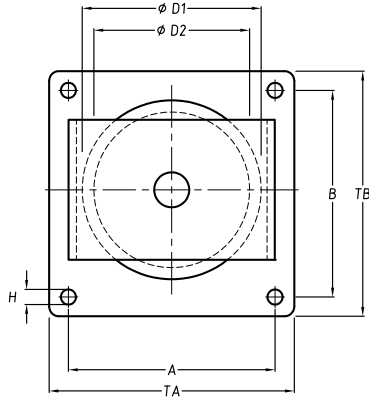


Horizontal Directional Blocks



Bronze bushing

Stock No.	WLL (t)	Wire size up to (mm)	Bearing	Dimensions (mm)													Weight (kg)
				ØD1	ØD2	A	B	C	F	ØG	H	T	R	TA	TB	TC	
25.125.01.70	1	10	Bronze	125	105	180	150	22.5	27	22	9	8	5.5	200	170	54	5
25.150.02.70	2	12	Bronze	150	120	220	190	31	40	30	11	10	6.5	250	220	72	10
25.200.03.70	3	14	Bronze	200	165	290	240	33	40	30	13.5	12	7.5	320	270	76	17
25.250.04.70	4	18	Bronze	250	210	360	310	38.5	45	35	17.5	15	9.5	400	350	86	32
25.300.06.70	6	20	Bronze	300	255	400	360	46	50	40	22	20	11	450	410	99	50
25.350.08.70	8	22	Bronze	350	305	460	420	46	50	45	26	20	12	520	480	99	70
25.400.10.70	10	24	Bronze	400	345	530	480	51	60	50	32	20	13	600	550	113	100

Minimum Ultimate Strength = 4 x WLL.

Ball or cylindrical roller bearing

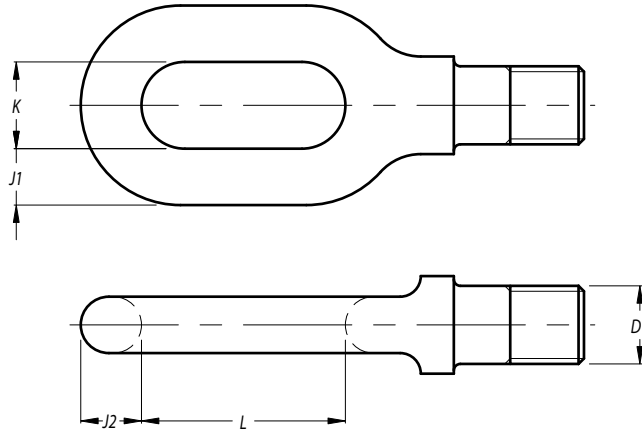
Stock No.	WLL (t)	Wire size up to (mm)	Bearing	Dimensions (mm)													Weight (kg)
				ØD1	ØD2	A	B	C	F	ØG	H	T	R	TA	TB	TC	
25.125.01.71	1	10	2 x Ball	125	105	180	150	22.5	27	22	9	8	5.5	200	170	54	5
25.150.02.71	2	12	2 x Ball	150	120	220	190	31	40	30	11	10	6.5	250	220	72	10
25.200.03.71	3	14	2 x Ball	200	165	290	240	33	40	30	13.5	12	7.5	320	270	76	17
25.250.04.71	4	18	Straight	250	210	360	310	38.5	45	35	17.5	15	9.5	400	350	86	32
25.300.06.71	6	20	Straight	300	255	400	360	46	50	40	22	20	11	450	410	99	50
25.350.08.71	8	22	Straight	350	305	460	420	46	50	45	26	20	12	520	480	99	70
25.400.10.71	10	24	Straight	400	345	530	480	51	60	50	32	20	13	600	550	113	100

Minimum Ultimate Strength = 4 x WLL.

WLL= Working Load Limit.

- No test certificate possible.
- Groove in sheave may be adjusted to other wire rope diameters.

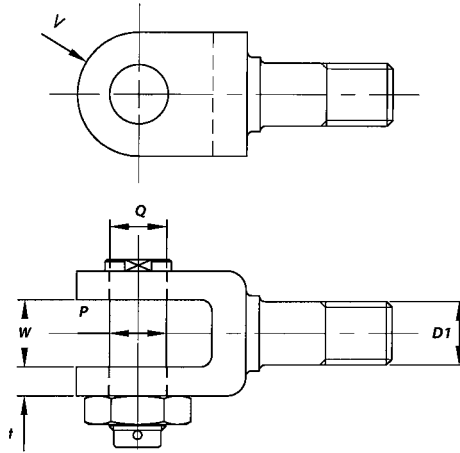
Oval Eye Head Fittings DIN 82006



Oval eye head fittings DIN 82006

Nominal size	WLL (t)	Dimensions (mm)				Thread D1
		L	K	J1	J2	
1	1	48	21	12	14	M 18
1.6	1.6	58	26	16	18	M 22
2	2	58	26	16	18	M 24
2.5	2.5	72	32	21	23	M 27
3	3.2	72	32	21	23	M 30
4	4	94	40	26	28	M 33
5	5	94	40	26	28	M 36
6	6.3	108	45	29	32	M 42
8	8	115	49	32	35	M 45
10	10	125	54	36	39	M 52
12	12.5	144	60	41	44	M 56
16	16	163	66	46	49	M 64
20	20	173	72	51	54	M 72 x 6
25	25	192	80	56	59	M 76 x 6
32	32	216	90	60	64	M 80 x 6
40	40	240	100	66	70	M 90 x 6
50	50	264	110	74	78	M 100 x 6
63	63	290	120	84	89	M 110 x 6
80	80	325	135	94	99	M 120 x 6
100	100	360	150	105	111	M 130 x 6
125	125	400	165	117	123	M 140 x 6
160	160	440	185	133	140	M 160 x 6
200	200	500	210	149	157	M 180 x 6
250	250	560	235	167	175	M 200 x 6

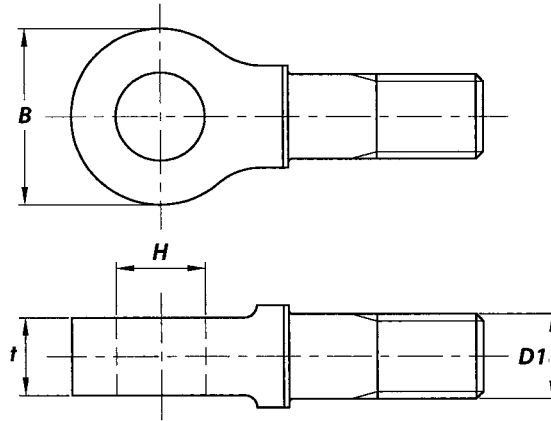
Jaw Head Fittings DIN 82008



Jaw (double lug) head fittings DIN 82008 / ISO 6043

Nominal size	WLL (t)	Dimensions (mm)					Tread D1
		W	t	Q	V	P	
1	1	19	8	17	17.5	16	M 18
2	2	26	12	23	25	22	M 24
2.5	2.5	29	13	25	27.5	24	M 27
3	3.2	32	14	28	30	27	M 30
4	4	35	15	31	32.5	30	M 33
5	5	39	18	37	37.5	36	M 36
6	6.3	45	20	40	42.5	39	M 42
8	8	49	23	46	47.5	45	M 45
10	10	58	26	50	55	48	M 52
12	12.5	64	28	54	60	52	M 56
16	16	70	30	62	65	60	M 64
20	20	74	33	70	70	68	M 72 x 6
25	25	80	35	74	75	72	M 76 x 6
32	32	90	40	82	85	80	M 80 x 6
40	40	100	45	90	95	93	M 90 x 6
50	50	110	50	100	105	104	M 100 x 6
63	63	120	65	110	115	114	M 110 x 6

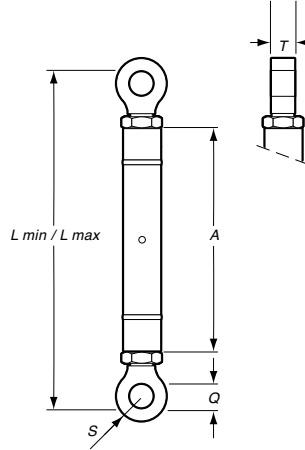
Round Eye Head Fittings DIN 82010



Round eye head fittings DIN 82010 / ISO 6043

Nominal size	WLL (t)	Dimensions (mm)				Thread D1
		t	H	B	Bolt	
1	1	16	18	35	16	M 18
2	2	22	25	50	22	M 24
2.5	2.5	25	27	55	24	M 27
3	3.2	28	30	60	27	M 30
4	4	30	33	65	30	M 33
5	5	35	39	75	36	M 36
6	6.3	40	42	85	39	M 42
8	8	45	48	95	45	M 45
10	10	50	52	110	48	M 52
12	12.5	55	56	120	52	M 56
16	16	60	65	130	60	M 64
20	20	65	74	140	68	M 72 x 6
25	25	70	78	150	72	M 76 x 6
32	32	80	86	170	80	M 80 x 6
40	40	90	96	190	90	M 90 x 6
50	50	100	106	210	100	M 100 x 6
63	63	110	116	230	110	M 110 x 6
80	80	125	131	270	125	M 120 x 6
100	100	140	146	296	140	M 130 x 6
125	125	160	168	336	160	M 140 x 6
160	160	180	188	380	180	M 160 x 6
200	200	200	208	420	200	M 180 x 6
250	250	220	230	460	220	M 200 x 6

Turnbuckles TR Series stud eye-stud eye



Turnbuckles with trapezoid thread

Stock No.	WLL (t)	L min (mm)	L max (mm)	Take-up (mm)	Thread (trap.)	Dimensions (mm)				Weight (kg)
						A	ØQ	S	T	
41.001.60.33	1.6	349	537	188	22 x 5	240	23	22.5	20	2
41.002.00.33	2	377	577	200	24 x 5	260	25	25	22	3
41.002.50.33	2.5	411	617	206	28 x 5	280	27	27.5	25	5
41.003.10.33	3.1	438	666	228	30 x 6	300	30	30	28	6
41.004.00.33	4	472	713	241	32 x 6	320	33	32.5	30	8
41.005.00.33	5	511	751	240	36 x 6	340	39	37.5	35	11
41.006.30.33	6.3	577	840	263	44 x 7	380	42	42.5	40	15
41.008.00.33	8	635	932	297	48 x 8	420	48	47.5	45	23
41.010.00.33	10	703	1012	309	52 x 8	460	52	55	50	30
41.012.60.33	12.6	762	1102	340	55 x 9	500	56	60	55	40
41.016.00.33	16	839	1193	354	65 x 10	540	65	65	60	55
41.020.00.33	20	904	1286	382	70 x 10	580	74	70	65	69
41.025.00.33	25	968	1372	404	75 x 10	620	78	75	70	78
41.031.50.33	31.5	1040	1470	430	80 x 10	660	86	85	80	113
41.040.00.33	40	1186	1681	495	90 x 10	695	96	95	90	136
41.050.00.33	50	1286	1836	550	100 x 10	770	106	105	100	160
41.063.00.33	63	1406	2011	605	110 x 10	845	116	115	110	220
41.080.00.33	80	1541	2201	660	120 x 10	920	131	135	125	280
41.100.00.33	100	1662	2377	715	130 x 10	995	146	148	140	370
41.125.00.33	125	1804	2574	770	140 x 10	1070	168	168	160	500
41.160.00.33	160	2028	2908	880	160 x 10	1220	188	190	180	725

Minimum Ultimate Strength = 5 x WLL.

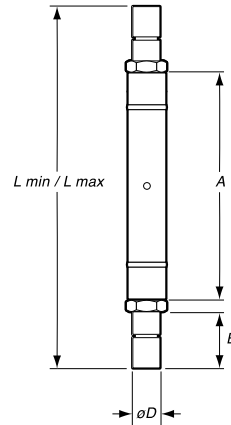
- Standard painted blue, but can be supplied in any color or galvanized.
- Available in all combinations of eyes, stud eyes and welding ends. • Factory supplied with lock nuts.
- Lock plates or special locking devices possible. • Can be supplied with turning wheel or ratchet. • Other sizes possible.
- Straight or in-line pull only.



SEE OUR WARNINGS AND APPLICATION INSTRUCTIONS



Turnbuckles TR Series stub end-stub end



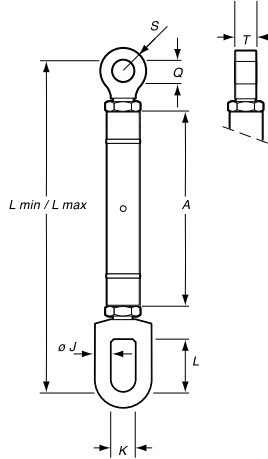
Turnbuckles with trapezoid thread

Stock No.	WLL (t)	L min (mm)	L max (mm)	Take-up (mm)	Thread (trap.)	Dimensions (mm)			Weight (kg)
						A	B	ØD	
41.006.30.55	6.3	519	792	273	44 x 7	380	50	45	16
41.008.00.55	8	569	870	301	48 x 8	420	55	50	24
41.010.00.55	10	625	928	303	52 x 8	460	60	55	32
41.012.60.55	12.6	678	1026	348	55 x 9	500	65	60	42
41.016.00.55	16	750	1112	362	65 x 10	540	75	70	58
41.020.00.55	20	800	1200	400	70 x 10	500	80	75	73
41.025.00.55	25	858	1278	420	75 x 10	540	85	80	82
41.031.50.55	31.5	920	1354	430	80 x 10	660	90	90	118

Minimum Ultimate Strength = 5 x WLL.

- Testing and certification not possible. • Standard painted blue, but can be supplied in any color or galvanized.
- Available in all combinations of jaws, oval eyes and stud eyes. • Factory supplied with lock nuts.
- Lock plates or special locking devices possible. • Can be supplied with turning wheel or ratchet. • Other sizes possible.
- Straight or in-line pull only.

Turnbuckles TR Series oval eye-stud eye



Turnbuckles with trapezoid thread

Stock No.	WLL (t)	L min (mm)	L max (mm)	Take-up (mm)	Thread (trap.)	Dimensions (mm)						Weight (kg)	
						A	ØJ	K	L	ØQ	S		T
41.001.60.23	1.6	400	588	188	22 x 5	240	16	26	58	23	22.5	20	2
41.002.00.23	2	424	624	200	24 x 5	260	16	26	58	25	25	22	3
41.002.50.23	2.5	475	681	206	28 x 5	280	20	32	72	27	27.5	25	5
41.003.10.23	3.1	498	726	228	30 x 6	300	20	32	72	30	30	28	7
41.004.00.23	4	554	795	241	32 x 6	320	25	40	94	33	32.5	30	9
41.005.00.23	5	585	825	240	36 x 6	340	25	40	94	39	37.5	35	12
41.006.30.23	6.3	665	928	263	44 x 7	380	30	45	108	42	42.5	40	17
41.008.00.23	8	724	1021	297	48 x 8	420	32	50	115	48	47.5	45	25
41.010.00.23	10	797	1106	309	52 x 8	460	36	60	125	52	55	50	33
41.012.60.23	12.6	875	1215	340	55 x 9	500	40	65	144	56	60	55	42
41.016.00.23	16	966	1320	354	65 x 10	540	45	70	163	65	65	60	58
41.020.00.23	20	1044	1426	382	70 x 10	580	55	75	173	74	70	65	71
41.025.00.23	25	1119	1523	404	75 x 10	620	60	80	192	78	75	70	82
41.031.50.23	31.5	1211	1641	430	80 x 10	660	60	90	216	86	85	80	119

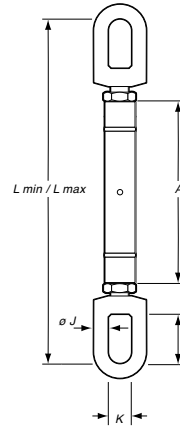
Minimum Ultimate Strength = 5 x WLL.

- Standard painted blue, but can be supplied in any color or galvanized.
- Factory supplied with lock nuts. • Lock plates or special locking devices possible.
- Can be supplied with turning wheel or ratchet. • Other sizes possible.
- Straight or in-line pull only.



SEE OUR WARNINGS AND APPLICATION INSTRUCTIONS

Turnbuckles TR Series oval eye-oval eye



Turnbuckles with trapezoid thread

Stock No.	WLL (t)	L min (mm)	L max (mm)	Take-up (mm)	Thread (trap.)	Dimensions (mm)				Weight (kg)
						A	ØJ	K	L	
41.001.60.22	1.6	450	638	188	22 x 5	240	16	26	58	2
41.002.00.22	2	470	670	200	24 x 5	260	16	26	58	3
41.002.50.22	2.5	538	754	216	28 x 5	280	20	32	72	5
41.003.10.22	3.1	558	786	228	30 x 6	300	20	32	72	7
41.004.00.22	4	635	876	241	32 x 6	320	25	40	94	9
41.005.00.22	5	658	898	240	36 x 6	340	25	40	94	13
41.006.30.22	6.3	753	1016	263	44 x 7	380	30	45	108	19
41.008.00.22	8	813	1110	297	48 x 8	420	32	50	115	27
41.010.00.22	10	891	1200	309	52 x 8	460	36	60	125	35
41.012.60.22	12.6	988	1328	340	55 x 9	500	40	65	144	46
41.016.00.22	16	1092	1446	354	65 x 10	540	45	70	163	64
41.020.00.22	20	1184	1566	382	70 x 10	580	55	75	173	78
41.025.00.22	25	1270	1674	404	75 x 10	620	60	80	192	90
41.031.50.22	31.5	1382	1812	430	80 x 10	660	60	90	216	130

Minimum Ultimate Strength = 5 x WLL

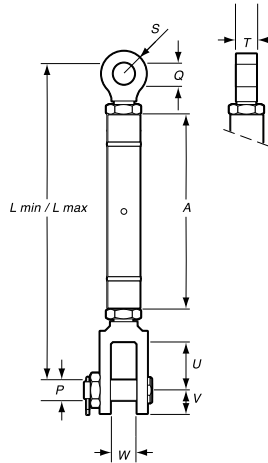
- Standard painted blue, but can be supplied in any color or galvanized.
- Available in all combinations of eyes, stud eyes and welding ends. • Factory supplied with lock nuts.
- Lock plates or special locking devices possible. • Can be supplied with turning wheel or ratchet. • Other sizes possible.
- Straight or in-line pull only.



SEE OUR WARNINGS AND APPLICATION INSTRUCTIONS



Turnbuckles TR Series jaw-stud eye



Turnbuckles with trapezoid thread

Stock No.	WLL (t)	L min (mm)	L max (mm)	Take-up (mm)	Thread (trap.)	Dimensions (mm)								Weight (kg)
						A	P	ØQ	S	T	U	V	W	
41.001.60.13	1.6	367	555	188	22 x 5	240	20	23	22.5	20	55	22	23	2
41.002.00.13	2	395	595	200	24 x 5	260	22	25	25	22	58	25	26	3
41.002.50.13	2.5	459	665	206	28 x 5	280	24	27	27.5	25	73	27	30	5
41.003.10.13	3.1	488	716	228	30 x 6	300	27	30	30	28	80	30	32	7
41.004.00.13	4	521	762	241	32 x 6	320	30	33	32.5	30	86	32	35	9
41.005.00.13	5	561	801	240	36 x 6	340	36	39	37.5	35	93	37	40	13
41.006.30.13	6.3	636	899	263	44 x 7	380	39	42	42.5	40	108	42	45	18
41.008.00.13	8	689	986	297	48 x 8	420	45	48	47.5	45	112	47	50	27
41.010.00.13	10	748	1057	309	52 x 8	460	48	52	55	50	115	55	60	35
41.012.60.13	12.6	812	1152	340	55 x 9	500	52	56	60	55	122	60	65	44
41.016.00.13	16	883	1237	354	65 x 10	540	60	65	65	60	130	65	70	61
41.020.00.13	20	957	1339	382	70 x 10	580	68	74	70	65	145	70	75	74
41.025.00.13	25	1026	1430	404	75 x 10	620	72	78	75	70	160	75	80	86
41.031.50.13	31.5	1105	1535	430	80 x 10	660	80	86	85	80	175	85	90	125
41.040.00.13	40	1230	1725	495	90 x 10	695	90	96	95	90	190	92	100	156
41.050.00.13	50	1335	1885	550	100 x 10	770	100	106	105	100	205	102	110	200
41.063.00.13	63	1463	2068	605	110 x 10	845	110	116	115	110	220	112	120	290
41.080.00.13	80	1594	2254	660	120 x 10	920	125	131	135	125	235	127	140	350
41.100.00.13	100	1702	2417	715	130 x 10	995	140	146	148	140	250	142	156	440
41.125.00.13	125	1838	2608	770	140 x 10	1070	160	168	168	160	270	162	176	660
41.160.00.13	160	2056	2936	880	160 x 10	1220	180	188	190	180	290	182	200	925

Minimum Ultimate Strength = 5 x WLL.

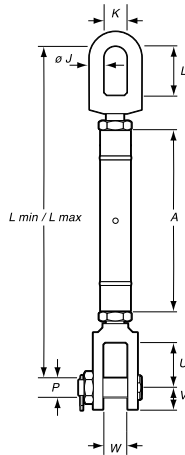
- Standard painted blue, but can be supplied in any color or galvanized.
- Factory supplied with lock nuts. • Lock plates or special locking devices possible.
- Can be supplied with turning wheel or ratchet. • Other sizes possible.
- Straight or in-line pull only.



SEE OUR WARNINGS AND APPLICATION INSTRUCTIONS



Turnbuckles TR Series jaw-oval eye



Turnbuckles with trapezoid thread

Stock No.	WLL (t)	L min (mm)	L max (mm)	Take-up (mm)	Thread (trap.)	Dimensions (mm)								Weight (kg)
						A	J	K	L	P	U	V	W	
41.001.60.12	1.6	417	605	188	22 x 5	240	16	26	58	20	55	22.5	23	3
41.002.00.12	2	441	641	200	24 x 5	260	16	26	58	22	58	25	26	4
41.002.50.12	2.5	522	728	206	28 x 5	280	20	32	72	24	73	27.5	30	6
41.003.10.12	3.1	548	776	228	30 x 6	300	20	32	72	27	80	30	32	7
41.004.00.12	4	602	843	241	32 x 6	320	25	40	94	30	86	32.5	35	10
41.005.00.12	5	634	874	240	36 x 6	340	25	40	94	36	93	37.5	40	14
41.006.30.12	6.3	724	987	263	44 x 7	380	30	45	108	39	108	42.5	45	20
41.008.00.12	8	778	1075	297	48 x 8	420	32	50	115	45	112	47.5	50	29
41.010.00.12	10	842	1151	309	52 x 8	460	36	60	125	48	115	55	60	37
41.012.60.12	12.6	925	1265	340	55 x 9	500	40	65	144	52	122	60	65	48
41.016.00.12	16	1009	1363	354	65 x 10	540	45	70	163	60	130	65	70	66
41.020.00.12	20	1097	1479	382	70 x 10	580	55	75	173	68	145	70	75	81
41.025.00.12	25	1177	1581	404	75 x 10	620	60	80	192	72	160	75	80	94
41.031.50.12	31.5	1276	1716	440	80 x 10	660	60	90	216	80	175	85	90	135

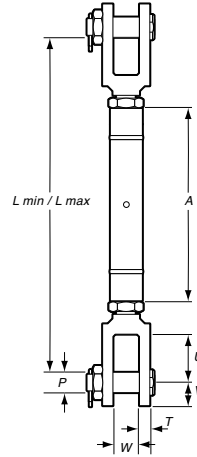
Minimum Ultimate Strength = 5 x WLL.

- Standard painted blue, but can be supplied in any color or galvanized.
- Factory supplied with lock nuts. • Lock plates or special locking devices possible.
- Can be supplied with turning wheel or ratchet. • Other sizes possible.
- Straight or in-line pull only.



SEE OUR WARNINGS AND APPLICATION INSTRUCTIONS

Turnbuckles TR Series jaw-jaw



Turnbuckles with trapezoid thread

Stock No.	WLL (t)	L min (mm)	L max (mm)	Take-up (mm)	Thread (trap.)	Dimensions (mm)						Weight (kg)
						A	P	U	V	W	T	
41.001.60.11	1.6	384	572	188	22 x 5	240	20	55	22.5	23	11	3
41.002.00.11	2	412	612	200	24 x 5	260	22	58	25	26	12	4
41.002.50.11	2.5	511	712	206	28 x 5	280	24	73	27.5	30	12	6
41.003.10.11	3.1	537	765	228	30 x 6	300	27	80	30	32	15	8
41.004.00.11	4	569	810	241	32 x 6	320	30	86	32.5	35	15	10
41.005.00.11	5	610	850	240	36 x 6	340	36	93	37.5	40	20	15
41.006.30.11	6.3	691	954	263	44 x 7	380	39	108	42.5	45	20	21
41.008.00.11	8	742	1038	296	48 x 8	420	45	112	47.5	50	25	31
41.010.00.11	10	793	1102	309	52 x 8	460	48	115	55	60	25	40
41.012.60.11	12.6	862	1202	340	55 x 9	500	52	122	60	65	30	52
41.016.00.11	16	926	1280	354	65 x 10	540	60	130	65	70	30	69
41.020.00.11	20	1010	1392	382	70 x 10	580	68	145	70	75	35	85
41.025.00.11	25	1084	1488	404	75 x 10	620	72	160	75	80	35	98
41.031.50.11	31.5	1170	1600	430	80 x 10	660	80	175	85	90	40	141
41.040.00.11	40	1280	1775	495	90 x 10	695	90	190	92	100	45	176
41.050.00.11	50	1390	1940	550	100 x 10	770	100	205	102	110	50	240
41.063.00.11	63	1525	2130	605	110 x 10	845	110	220	112	120	60	340
41.080.00.11	80	1655	2315	660	120 x 10	920	125	235	127	140	70	420
41.100.00.11	100	1750	2465	715	130 x 10	995	140	250	142	156	70	510
41.125.00.11	125	1880	2650	770	140 x 10	1070	160	270	162	176	80	820
41.160.00.11	160	2090	2970	880	160 x 10	1220	180	290	182	200	90	1120

Minimum Ultimate Strength = 5 x WLL

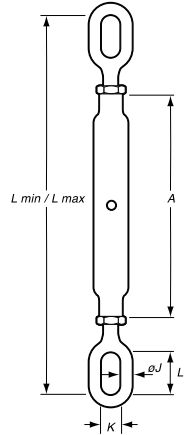
- Standard painted blue, but can be supplied in any color or galvanized.
- Available in all combinations of eyes, stud eyes and welding ends. • Factory supplied with lock nuts.
- Lock plates or special locking devices possible. • Can be supplied with turning wheel or ratchet. • Other sizes possible.
- Straight or in-line pull only.



SEE OUR WARNINGS AND APPLICATION INSTRUCTIONS



Closed Body Turnbuckles M Series oval eye-oval eye



Turnbuckles with metric thread

Stock No.	WLL (t)	MBL (t)	Thread	L min (mm)	L max (mm)	Take up (mm)	Dimensions (mm)				Weight (kg)
							A	J	K	L	
42.000.30.22A	0.3	1.5	M8	203	305	102	127	8	9	20	0.3
42.000.50.22A	0.5	2.5	M10	235	349	114	152	8	11	25	0.4
42.000.70.22A	0.7	3.5	M12	330	530	200	229	11	14	36	0.9
42.001.20.22A	1.2	6	M16	377	560	183	229	14	18	40	1.2
42.001.50.22A	1.5	7.5	M20	410	565	155	229	17	25	55	2.0
42.002.20.22A	2.2	11	M22	486	730	244	305	17	25	55	3.1
42.003.20.22A	3.2	16	M24	556	856	300	356	20	26	57	3.9
42.003.80.22A	3.8	19	M27	576	856	280	356	20	26	57	4.8
42.005.00.22A	5	25	M33	640	920	280	381	25	34	64	6.8
42.006.30.22A	6.3	31.5	M36	650	920	270	381	27	38	75	9
42.007.00.22A	7	35	M39	687	970	283	407	27	38	75	10.0
42.008.50.22A	8.5	42.5	M45	720	1020	300	407	30	40	85	14.0
42.010.00.22A	10	50	M48	770	1050	280	407	37	44	92	18.0

Minimum Ultimate Strength = 5 x WLL.

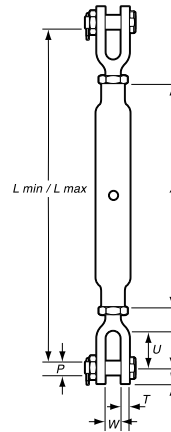
- Standard hot dip galvanized.
- Factory supplied with locking nuts.
- Testing on request (at additional costs).
- Bolt secured with nut and split pin.
- Straight or in-line pull only.



SEE OUR WARNINGS AND APPLICATION INSTRUCTIONS



Closed Body Turnbuckles M Series jaw-jaw



Turnbuckles with metric thread

Stock No.	WLL (t)	MBL (t)	Thread	L min (mm)	L max (mm)	Take up (mm)	Dimensions (mm)					Weight (kg)
							A	P	U	V	W	
42.000.30.11A	0.3	1.5	M8	203	305	102	127	6	21	9	9	0.2
42.000.50.11A	0.5	2.5	M10	245	355	110	160	8	21	9	11	0.3
42.000.70.11A	0.7	3.5	M12	345	525	180	230	10	35	13	19	0.8
42.001.20.11A	1.2	6	M16	395	565	170	230	12	50	16	21	1.4
42.001.50.11A	1.5	7.5	M20	395	555	160	230	16	46	18	21	2.2
42.002.20.11A	2.2	11	M22	476	702	226	305	20	60	20	25	3.5
42.003.20.11A	3.2	16	M24	580	860	280	360	22	63	24	30	4.1
42.003.80.11A	3.8	19	M27	600	870	270	356	22	63	24	31	4.5
42.005.00.11A	5	25	M33	650	930	280	385	24	74	30	38	6.4
42.006.30.11A	6.3	31.5	M36	680	910	230	385	30	85	30	48	11
42.007.00.11A	7	35	M39	670	949	279	407	34	90	32	47	11
42.008.50.11A	8.5	42.5	M45	780	1020	240	410	35	120	43	50	19
42.010.00.11A	10	55	M48	743	977	234	407	43	121	46	51	22
42.012.60.11	12.6	63	M56	862	1202	340	500	52	122	60	65	39
42.016.00.11	16	80	M64	925	1280	355	540	60	130	65	70	48

Minimum Ultimate Strength = 5 x WLL.

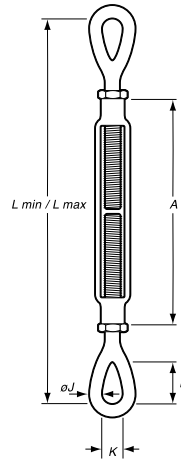
- Standard hot dip galvanized.
- Factory supplied with locking nuts.
- Testing on request (at additional costs).
- Bolt secured with nut and split pin.
- Straight or in-line pull only.



SEE OUR WARNINGS AND APPLICATION INSTRUCTIONS



Open Body Turnbuckles oval eye-oval eye



Generally to ASTM F 1145-92

Stock No.	Thread dia. x Take-up		WLL (t)	Dimensions (mm)						Weight (kg)
	(inches)	(mm)		Lmin	Lmax	A	ØJ	K	L	
40.025.04.22	1/4 x 4	6.35 x 102	0.23	198	300	121	6	9	20	0.12
40.031.04.22	5/16 x 4-1/2	7.94 x 114	0.36	230	344	138	8	11	24	0.20
40.033.06.22	3/8 x 6	9.53 x 152	0.54	291	444	181	9	13	28	0.34
40.050.06.22	1/2 x 6	12.7 x 152	1.00	332	510	191	11	18	37	0.70
40.050.12.22	1/2 x 12	12.7 x 305	1.00	485	815	343	11	18	37	0.97
40.062.06.22	5/8 x 6	15.9 x 152	1.59	373	557	200	13	22	44	1.49
40.062.12.22	5/8 x 12	15.9 x 305	1.59	525	862	353	13	22	44	1.55
40.075.06.22	3/4 x 6	19.1 x 152	2.36	416	607	210	16	25	53	1.72
40.075.12.22	3/4 x 12	19.1 x 305	2.36	568	911	362	16	25	53	2.49
40.075.18.22	3/4 x 18	19.1 x 457	2.36	721	1216	514	16	25	53	3.26
40.087.12.22	7/8 x 12	22.2 x 305	3.27	592	942	370	19	32	60	3.27
40.087.18.22	7/8 x 18	22.2 x 457	3.27	745	1246	523	19	32	60	4.51
40.100.06.22	1 x 6	25.4 x 152	4.54	507	710	228	23	36	76	4.10
40.100.12.22	1 x 12	25.4 x 305	4.54	660	1015	380	23	36	76	5.22
40.100.18.22	1 x 18	25.4 x 457	4.54	812	1320	532	23	36	76	6.35
40.100.24.22	1 x 24	25.4 x 610	4.54	964	1625	685	23	36	76	7.82
40.125.12.22	1-1/4 x 12	31.8 x 305	6.89	719	1087	384	29	46	90	8.62
40.125.18.22	1-1/4 x 18	31.8 x 457	6.89	871	1392	537	29	46	90	10.40
40.125.24.22	1-1/4 x 24	31.8 x 610	6.89	1024	1697	689	29	46	90	12.20
40.150.12.22	1-1/2 x 12	38.1 x 305	9.71	775	1156	400	32	54	103	12.50
40.150.18.22	1-1/2 x 18	38.1 x 457	9.71	927	1461	553	32	54	103	14.10
40.150.24.22	1-1/2 x 24	38.1 x 610	9.71	1080	1765	705	32	54	103	17.00
40.175.18.22	1-3/4 x 18	44.5 x 457	12.70	1000	1457	568	38	60	117	23.80
40.175.24.22	1-3/4 x 24	44.5 x 610	12.70	1153	1762	721	38	60	117	26.30
40.200.24.22	2 x 24	51.0 x 610	16.80	1313	1923	738	45	68	146	38.70
40.250.24.22	2-1/2 x 24	63.5 x 610	27.20	1387	1997	789	51	79	165	65.00
40.275.24.22	2-3/4 x 24	70.0 x 610	34.00	1448	2057	788	57	82	177	88.00

Minimum Ultimate Strength = 5 x WLL.

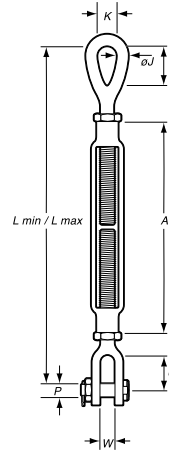
- Standard hot dip galvanized. • Factory supplied with lock nuts. • Testing on request. • Proof load 2.5 x WLL.
- Straight or in-line pull only. • Drop forged high tensile steel. • MBL equals or over 5x WLL



SEE OUR WARNINGS AND APPLICATION INSTRUCTIONS



Open Body Turnbuckles jaw-oval eye



Generally to ASTM F 1145-92

Stock No.	Thread dia. x Take-up		WLL (t)	Dimensions (mm)										Weight (kg)
	(inches)	(mm)		Lmin	Lmax	A	ØJ	K	L	P	U	W		
40.025.04.12	1/4 x 4	6.35 x 102	0.23	187	288	121	6	9	20	6	15	11	0.14	
40.031.04.12	5/16 x 4-1/2	7.94 x 114	0.36	221	348	138	8	11	24	6	22	13	0.23	
40.033.06.12	3/8 x 6	9.53 x 152	0.54	275	427	181	9	13	28	8	22	14	0.36	
40.050.06.12	1/2 x 6	12.7 x 152	1.00	312	490	190	11	18	37	10	27	16	0.68	
40.050.09.12	1/2 x 9	12.7 x 229	1.00	388	642	266	11	18	37	10	27	16	0.78	
40.050.12.12	1/2 x 12	12.7 x 305	1.00	465	795	343	11	18	37	10	27	16	0.94	
40.062.06.12	5/8 x 6	15.9 x 152	1.59	349	533	200	13	22	44	13	33	20	1.07	
40.062.09.12	5/8 x 9	15.9 x 229	1.59	425	686	276	13	22	44	13	33	20	1.44	
40.062.12.12	5/8 x 12	15.9 x 305	1.59	501	838	353	13	22	44	13	33	20	1.64	
40.075.06.12	3/4 x 6	19.1 x 152	2.36	390	575	210	16	25	53	16	38	24	1.81	
40.075.09.12	3/4 x 9	19.1 x 229	2.36	470	730	286	16	25	53	16	38	24	2.15	
40.075.12.12	3/4 x 12	19.1 x 305	2.36	540	880	362	16	25	53	16	38	24	2.69	
40.075.18.12	3/4 x 18	19.1 x 457	2.36	691	1186	514	16	25	53	16	38	24	3.18	
40.087.12.12	7/8 x 12	22.2 x 305	3.27	567	917	307	19	32	60	19	44	29	3.79	
40.087.18.12	7/8 x 18	22.2 x 457	3.27	720	1220	523	19	32	60	19	44	29	4.42	
40.100.06.12	1 x 6	25.4 x 152	4.54	470	670	228	23	36	76	22	52	34	4.05	
40.100.12.12	1 x 12	25.4 x 305	4.54	620	970	380	23	36	76	22	52	34	5.08	
40.100.18.12	1 x 18	25.4 x 457	4.54	680	1260	532	23	36	76	22	52	34	6.03	
40.100.24.12	1 x 24	25.4 x 610	4.54	930	1580	685	23	36	76	22	52	34	7.71	
40.125.12.12	1-1/4 x 12	31.8 x 305	6.89	690	1050	384	29	46	90	28	71	44	8.81	
40.125.18.12	1-1/4 x 18	31.8 x 457	6.89	850	1350	537	29	46	90	28	71	44	11.00	
40.125.24.12	1-1/4 x 24	31.8 x 610	6.89	990	1650	689	29	46	90	28	71	44	12.90	
40.150.12.12	1-1/2 x 12	38.1 x 305	9.71	725	1105	400	32	54	103	35	71	52	13.10	
40.150.18.12	1-1/2 x 18	38.1 x 457	9.71	880	1410	553	32	54	103	35	71	52	15.90	
40.150.24.12	1-1/2 x 24	38.1 x 610	9.71	1030	1715	705	32	54	103	35	71	52	17.80	
40.175.18.12	1-3/4 x 18	44.5 x 457	12.70	950	1410	568	38	60	117	41	86	66	24.40	
40.175.24.12	1-3/4 x 24	44.5 x 610	12.70	1100	1711	721	38	60	117	41	86	66	27.50	
40.200.24.12	2 x 24	51.0 x 610	16.80	1235	1845	738	45	68	146	51	94	66	40.40	
40.250.24.12	2-1/2 x 24	63.5 x 610	27.20	1315	1925	789	51	79	165	57	113	76	68.00	
40.275.24.12	2-3/4 x 24	70.0 x 610	34.00	1370	1980	789	57	82	177	70	106	92	83.00	

- Standard hot dip galvanized. • Factory supplied with lock nuts. • Testing on request.
- Proof load 2.5 x WLL. • Straight or in-line pull only. • Drop forged high tensile steel. • MBL equals or over 5x WLL

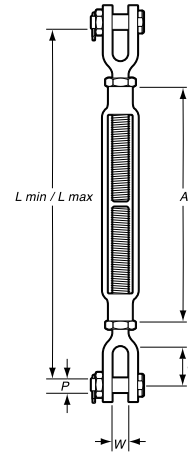
Minimum Ultimate Strength = 5 x WLL.



SEE OUR WARNINGS AND APPLICATION INSTRUCTIONS



Open Body Turnbuckles jaw-jaw



Generally to ASTM F 1145-92

Stock No.	Thread dia. x Take-up		WLL (t)	Dimensions (mm)						Weight (kg)
	(inches)	(mm)		Lmin	Lmax	A	P	U	W	
40.025.04.11	1/4 x 4	6.35 x 102	0.23	175	277	121	6	15	11	0.16
40.031.04.11	5/16 x 4-1/2	7.94 x 114	0.36	212	314	138	6	22	13	0.24
40.033.06.11	3/8 x 6	9.53 x 152	0.54	258	410	181	8	22	14	0.37
40.050.06.11	1/2 x 6	12.7 x 152	1.00	292	470	190	10	27	16	0.71
40.050.09.11	1/2 x 9	12.7 x 229	1.00	368	622	266	10	27	16	0.79
40.050.12.11	1/2 x 12	12.7 x 305	1.00	445	775	343	10	27	15	1.09
40.062.06.11	5/8 x 6	15.9 x 152	1.59	325	509	200	13	33	20	1.23
40.062.09.11	5/8 x 9	15.9 x 229	1.59	401	662	276	13	33	20	1.56
40.062.12.11	5/8 x 12	15.9 x 305	1.59	478	814	353	13	33	20	1.77
40.075.06.11	3/4 x 6	19.1 x 152	2.36	356	546	210	16	38	24	1.86
40.075.09.11	3/4 x 9	19.1 x 229	2.36	432	699	286	16	38	24	2.48
40.075.12.11	3/4 x 12	19.1 x 305	2.36	508	851	362	16	38	24	2.98
40.075.18.11	3/4 x 18	19.1 x 457	2.36	660	1156	514	16	38	24	3.64
40.087.12.11	7/8 x 12	22.2 x 305	3.27	543	892	370	19	44	29	3.71
40.087.18.11	7/8 x 18	22.2 x 457	3.27	695	1197	523	19	44	29	4.89
40.100.06.11	1 x 6	25.4 x 152	4.54	425	628	228	22	52	34	4.62
40.100.12.11	1 x 12	25.4 x 305	4.54	577	933	380	22	52	34	5.53
40.100.18.11	1 x 18	25.4 x 457	4.54	729	1237	532	22	52	34	6.87
40.100.24.11	1 x 24	25.4 x 610	4.54	882	1542	685	22	52	34	8.20
40.125.12.11	1-1/4 x 12	31.8 x 305	6.89	644	1012	384	28	71	44	9.34
40.125.18.11	1-1/4 x 18	31.8 x 457	6.89	796	1317	537	28	71	44	11.20
40.125.24.11	1-1/4 x 24	31.8 x 610	6.89	948	1622	689	28	71	44	12.80
40.150.12.11	1-1/2 x 12	38.1 x 305	9.71	673	1073	400	35	71	52	13.90
40.150.18.11	1-1/2 x 18	38.1 x 457	9.71	826	1359	553	35	71	52	16.70
40.150.24.11	1-1/2 x 24	38.1 x 610	9.71	978	1664	705	35	71	52	18.90
40.175.18.11	1-3/4 x 18	44.5 x 457	12.70	899	1356	568	41	86	66	24.50
40.175.24.11	1-3/4 x 24	44.5 x 610	12.70	1051	1661	721	41	86	66	28.70
40.200.24.11	2 x 24	51.0 x 610	16.80	1157	1766	738	51	94	66	42.80
40.250.24.11	2-1/2 x 24	63.5 x 610	27.20	1244	1854	789	57	113	76	75.00
40.275.24.11	2-3/4 x 24	70.0 x 610	34.00	1289	1899	788	70	106	92	90.00

- Standard hot dip galvanized. • Factory supplied with lock nuts. • Testing on request.
- Proof load 2.5 x WLL. • Straight or in-line pull only. • Drop forged high tensile steel. • MBL equals or over 5x WLL

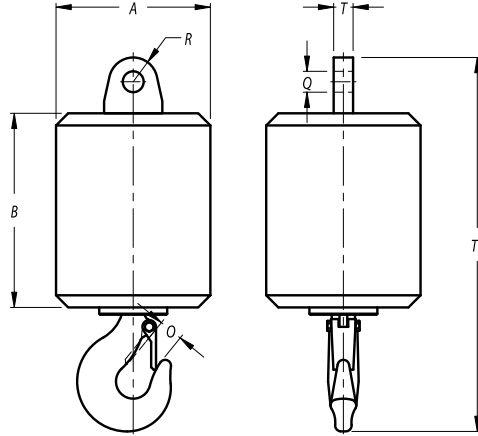
Minimum Ultimate Strength = 5 x WLL.



SEE OUR WARNINGS AND APPLICATION INSTRUCTIONS



Overhaul Ball



Overhaul Ball DIN Hook

Stock No.	Model No.	Type	Hook DIN	WLL (t)	Dimensions (mm)							Weight (kg)
					A	B	O	Q	R	T	TL	
56.0020.003.34	OHB 3,2.20.C	Eye-Hook	2.5 P	3.2	145	145	41	27	30	22	441	20
56.0060.003.34	OHB 3,2.60.C	Eye-Hook	2.5 P	3.2	200	225	41	27	30	22	521	60
56.0080.003.34	OHB 3,2.80.C	Eye-Hook	2.5 P	3.2	220	255	41	27	30	22	551	80
56.0100.003.34	OHB 3,2.100.C	Eye-Hook	2.5 P	3.2	240	275	41	27	30	22	571	100
56.0040.005.34	OHB 5.40.C	Eye-Hook	2.5 P	5	170	190	41	32	35	28	500	40
56.0080.005.34	OHB 5.80.C	Eye-Hook	2.5 P	5	220	255	41	32	35	28	566	80
56.0100.005.34	OHB 5.100.C	Eye-Hook	2.5 P	5	240	275	41	32	35	28	586	100
56.0130.005.34	OHB 5.130.C	Eye-Hook	2.5 P	5	260	310	41	32	35	28	621	130
56.0100.006.34	OHB 6,3.100.C	Eye-Hook	4 P	6.3	240	275	49	37	45	35	630	100
56.0130.006.34	OHB 6,3.130.C	Eye-Hook	4 P	6.3	260	310	49	37	45	35	665	130
56.0170.006.34	OHB 6,3.170.C	Eye-Hook	4 P	6.3	280	340	49	37	45	35	695	170
56.0040.008.34	OHB 8.040.C	Eye-Hook	4 P	8	170	190	49	37	45	35	556	40
56.0130.008.34	OHB 8.130.C	Eye-Hook	4 P	8	260	310	49	37	45	35	665	130
56.0170.008.34	OHB 8.170.C	Eye-Hook	4 P	8	280	340	49	37	45	35	695	170
56.0210.008.34	OHB 8.210.C	Eye-Hook	4 P	8	300	335	49	37	45	35	735	210
56.0045.010.34	OHB 10.045.C	Eye-Hook	5 P	10	170	190	55	43	50	40	643	45
56.0170.010.34	OHB 10.170.C	Eye-Hook	5 P	10	280	340	55	43	50	40	747	170
56.0210.010.34	OHB 10.210.C	Eye-Hook	5 P	10	300	335	55	43	50	40	787	210
56.0250.010.34	OHB 10.250.C	Eye-Hook	5 P	10	320	400	55	43	50	40	807	250
56.0045.013.34	OHB 12,5.045.C	Eye-Hook	5 P	12.5	170	190	55	52	60	45	663	45
56.0210.013.34	OHB 12,5.210.C	Eye-Hook	5 P	12.5	300	355	55	52	60	45	807	210
56.0250.013.34	OHB 12,5.250.C	Eye-Hook	5 P	12.5	320	400	55	52	60	45	827	250
56.0350.013.34	OHB 12,5.350.C	Eye-Hook	5 P	12.5	350	450	55	52	60	45	877	350
56.0050.016.34	OHB 16.050.C	Eye-Hook	6 P	16	170	190	59	59	70	50	723	50
56.0250.016.34	OHB 16.250.C	Eye-Hook	6 P	16	320	400	59	59	70	50	934	250
56.0350.016.34	OHB 16.350.C	Eye-Hook	6 P	16	350	450	59	59	70	50	984	350
56.0500.016.34	OHB 16.500.C	Eye-Hook	6 P	16	410	500	59	59	70	50	1034	500
56.0350.020.34	OHB 20.350.C	Eye-Hook	8 P	20	350	450	69	65	75	60	1022	350
56.0500.020.34	OHB 20.500.C	Eye-Hook	8 P	20	410	500	69	65	75	60	1072	500
56.0650.020.34	OHB 20.650.C	Eye-Hook	8 P	20	430	550	69	65	75	60	1122	650

Minimum Ultimate Strength = 4 x WLL.

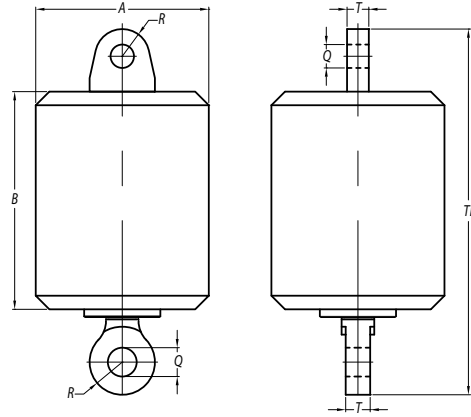
- Ball swivel with roller thrust bearing, grease lubricated. • Ball swivel for higher WLL and of higher weights available on request.
- Hole can be made larger on request. • Standard painted in yellow. • On request, swivels can be made suitable for subsea use.



SEE OUR WARNINGS AND APPLICATION INSTRUCTIONS



Ball Swivel Eye-Eye



Overhaul Ball Swivel

Stock No.	type	WLL (t)	Dimensions (mm)						Weight (kg)
			A	B	Q	R	T	TL	
56.0020.003.33	eye - eye	3.2	145	145	27	30	22	300	20
56.0020.005.33	eye - eye	5	145	145	32	35	28	320	20
56.0040.005.33	eye - eye	5	170	190	32	35	28	365	40
56.0040.008.33	eye - eye	8	170	190	37	45	35	405	40
56.0045.010.33	eye - eye	10	170	190	43	50	40	435	45
56.0045.013.33	eye - eye	12.5	170	190	52	60	45	475	45
56.0050.016.33	eye - eye	16	170	190	59	70	50	525	50
56.0105.020.33	eye - eye	20	250	265	65	75	60	630	105
56.0110.025.33	eye - eye	25	250	265	72	80	70	660	110
56.0125.035.33	eye - eye	35	250	265	79	90	70	685	125
56.0140.055.33	eye - eye	55	250	265	92	105	80	760	140
56.0200.070.33	eye - eye	70	300	330	98	120	90	885	200
56.0225.085.33	eye - eye	85	300	330	111	135	100	965	225
56.0500.120.33	eye - eye	120	380	430	100	125	130	1020	500
56.0600.150.33	eye - eye	150	400	450	115	140	150	1110	600
56.0800.200.33	eye - eye	200	460	480	140	170	160	1265	800
56.1000.250.33	eye - eye	250	500	600	150	185	180	1455	1000
56.1500.300.33	eye - eye	300	580	670	160	200	190	1590	1500

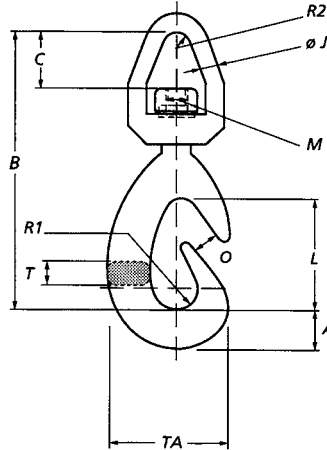
Minimum Ultimate Strength = 4 x WLL.

- Ball swivel with roller thrust bearing, grease lubricated.
- Ball swivel for higher WLL and of higher weights available on request.
- Hole can be made larger on request.
- Standard painted in yellow.
- On request, swivels can be made suitable for subsea use.



SEE OUR WARNINGS AND APPLICATION INSTRUCTIONS

Swivel Cargo Hooks

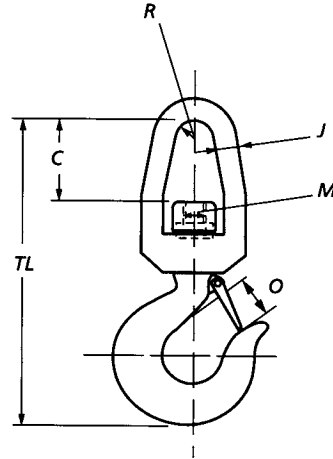


Stock No.	WLL (t)	Dimensions (mm)											Weight (kg)
		A	B	C	J	L	M	O	R1	R2	T	TA	
50.003.02.00	2	50	370	65	20	175	M24	44	30	15	40	170	8
50.003.03.00	3	60	435	80	25	185	M30	47	35	17	40	180	12
50.003.05.00	5	70	505	100	30	200	M45	50	40	25	50	210	20
50.003.08.00	8	90	630	120	40	250	M48	60	50	25	70	280	49
50.003.10.00	10	115	700	140	40	280	M52	70	60	30	80	340	88

Minimum Ultimate Strength = 4 x WLL.

- Standard fitted with thrust bearing.
- Swivels for higher working loads available on request.

Swivels with Thrust Bearing Bow-Hook

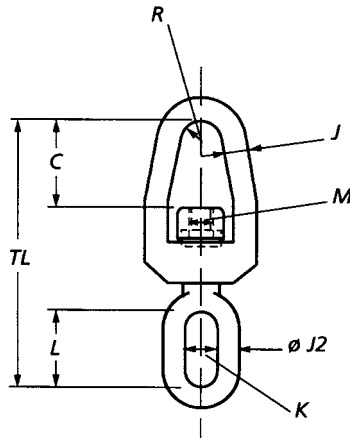


Stock No.	WLL (t)	Dimensions (mm)						Hook Type	Weight (kg)
		C	J	M	R	O	TL		
51.005.02.35	2	65	20	24	15	35	279	Crosby IC	3
51.005.03.35	3	80	25	30	17	42	342	Crosby JC	6.5
51.005.06.35	6.3	100	30	45	25	56	427	Crosby KC	11.5
51.005.08.35	8	120	40	48	25	61	513	Crosby LC	23
51.005.10.35	10	140	40	52	30	81	592	Crosby NC	37
51.005.12.35	12.5	150	40	52	30	71	670	15401-6P	45
51.005.16.35	16	150	45	60	40	80	720	15401-8P	55
51.005.20.35	20	235	60	56	45	81	725	15401-10P	70

Minimum Ultimate Strength = 4 x WLL.

- Standard fitted with thrust bearing.
- Swivels for higher working loads available on request.

Swivels with Thrust Bearing Bow-Oval Eye

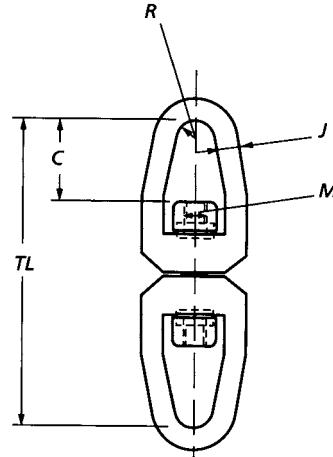


Stock No.	WLL (t)	Dimensions (mm)								Weight (kg)
		C	J1	J2	K	L	M	R	TL	
51.005.02.25	2	65	20	16	26	58	24	15	205	2
51.005.03.25	3	80	25	21	32	72	30	17	260	4
51.005.06.25	6	100	30	29	45	108	45	25	350	8
51.005.08.25	8	120	40	36	54	125	48	25	415	19
51.005.10.25	10	140	40	36	54	125	52	30	445	27
51.005.12.25	12.5	142	40	41	60	144	52	30	470	34
51.005.16.25	16	160	45	46	66	163	64	40	500	40
51.005.20.25	20	192	55	51	72	173	72	50	510	50

Minimum Ultimate Strength = 4 x WLL.

- Standard fitted with thrust bearing.
- Swivels for higher working loads available on request.

Swivels with Thrust Bearing Bow-Bow

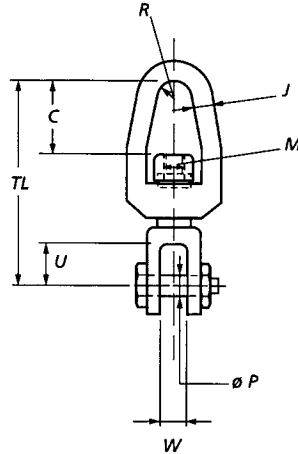


Stock No.	WLL (t)	Dimensions (mm)					Weight (kg)
		C	J	M	R	TL	
51.005.02.55	2	65	20	24	15	245	4
51.005.03.55	3	80	25	30	17	305	6
51.005.06.55	6.3	100	30	45	25	385	12
51.005.08.55	8	120	40	48	25	515	24
51.005.10.55	10	140	40	52	30	545	32
51.005.12.55	12.5	150	40	52	30	545	36
51.005.16.55	16	170	45	64	40	600	43
51.005.20.55	20	192	55	72	50	680	50

Minimum Ultimate Strength = 4 x WLL.

- Standard fitted with thrust bearing.
- Swivels for higher working loads available on request.

Swivels with Thrust Bearing Bow-Double Lug

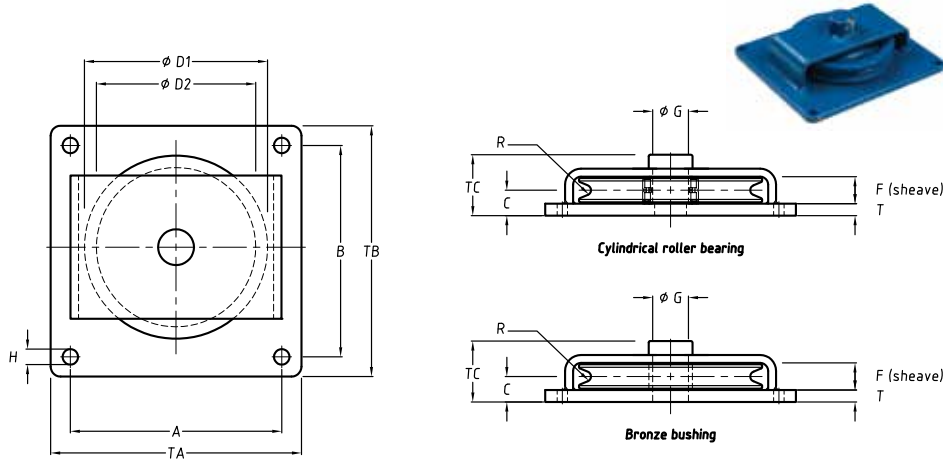


Stock No.	WLL (t)	Dimensions (mm)								Weight (kg)
		C	J1	M	P	R	TL	U	W	
51.005.02.15	2	65	20	24	24	15	190	36	32	3.5
51.005.03.15	3	80	25	30	27	17	220	36	32	5
51.005.06.15	6	100	30	45	39	25	285	51	45	10
51.005.08.15	8	120	40	48	45	25	350	56	49	20
51.005.10.15	10	140	40	52	48	30	370	63	55	30

Minimum Ultimate Strength = 4 x WLL.

- Standard fitted with thrust bearing.
- Swivels for higher working loads available on request.

Horizontal Directional Blocks



Bronze bushing

Stock No.	WLL (t)	Wire size up to (mm)	Bearing	Dimensions (mm)													Weight (kg)
				ØD1	ØD2	A	B	C	F	ØG	H	T	R	TA	TB	TC	
25.125.01.70	1	10	Bronze	125	105	180	150	22.5	27	22	9	8	5.5	200	170	54	5
25.150.02.70	2	12	Bronze	150	120	220	190	31	40	30	11	10	6.5	250	220	72	10
25.200.03.70	3	14	Bronze	200	165	290	240	33	40	30	13.5	12	7.5	320	270	76	17
25.250.04.70	4	18	Bronze	250	210	360	310	38.5	45	35	17.5	15	9.5	400	350	86	32
25.300.06.70	6	20	Bronze	300	255	400	360	46	50	40	22	20	11	450	410	99	50
25.350.08.70	8	22	Bronze	350	305	460	420	46	50	45	26	20	12	520	480	99	70
25.400.10.70	10	24	Bronze	400	345	530	480	51	60	50	32	20	13	600	550	113	100

Minimum Ultimate Strength = 4 x WLL.

Ball or cylindrical roller bearing

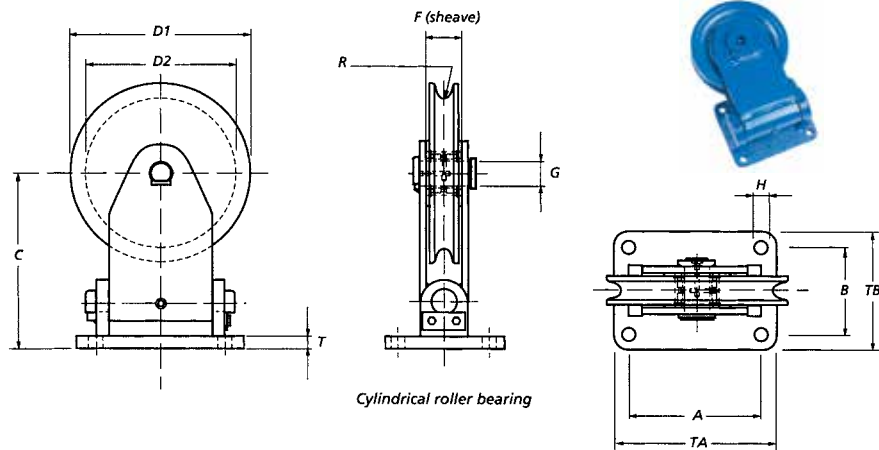
Stock No.	WLL (t)	Wire size up to (mm)	Bearing	Dimensions (mm)													Weight (kg)
				ØD1	ØD2	A	B	C	F	ØG	H	T	R	TA	TB	TC	
25.125.01.71	1	10	2 x Ball	125	105	180	150	22.5	27	22	9	8	5.5	200	170	54	5
25.150.02.71	2	12	2 x Ball	150	120	220	190	31	40	30	11	10	6.5	250	220	72	10
25.200.03.71	3	14	2 x Ball	200	165	290	240	33	40	30	13.5	12	7.5	320	270	76	17
25.250.04.71	4	18	Straight	250	210	360	310	38.5	45	35	17.5	15	9.5	400	350	86	32
25.300.06.71	6	20	Straight	300	255	400	360	46	50	40	22	20	11	450	410	99	50
25.350.08.71	8	22	Straight	350	305	460	420	46	50	45	26	20	12	520	480	99	70
25.400.10.71	10	24	Straight	400	345	530	480	51	60	50	32	20	13	600	550	113	100

WLL= Working Load Limit.

- No test certificate possible.
- Groove in sheave may be adjusted to other wire rope diameters.

Minimum Ultimate Strength = 4 x WLL.

Swivel Directional Blocks



Bronze bushing

Stock No.	WLL (t)	Wire size up to (mm)	Bearing	Dimensions (mm)											Weight (kg)	
				D1	D2	A	B	C	F	G	H	T	R	TA		TB
25.125.01.50	1	10	Bronze	125	105	90	70	128	27	22	9	8	5.5	115	95	3.5
25.150.02.50	2	12	Bronze	150	120	115	85	160	40	30	11	10	6.5	140	110	6.5
25.200.03.50	3	14	Bronze	200	165	150	95	197	40	30	13.5	12	7.5	180	125	11
25.250.04.50	4	18	Bronze	250	210	190	120	240	45	35	17.5	15	9.5	230	160	21
25.300.06.50	6	20	Bronze	300	255	220	150	295	50	40	22	20	11	270	200	33
25.350.08.50	8	22	Bronze	350	305	270	160	350	50	45	26	25	12	330	220	52
25.400.10.50	10	24	Bronze	400	345	300	190	400	60	50	32	30	13	370	260	80

Minimum Ultimate Strength = 4 x WLL.

Ball or cylindrical roller bearing

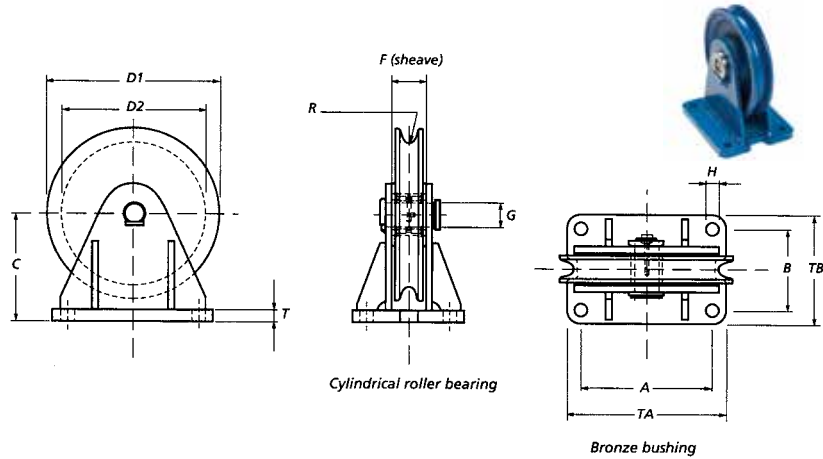
Stock No.	WLL (t)	Wire size up to (mm)	Bearing	Dimensions (mm)											Weight (kg)	
				D1	D2	A	B	C	F	G	H	T	R	TA		TB
25.125.01.51	1	10	2 x Ball	125	105	90	70	128	27	22	9	8	5.5	115	95	3.5
25.150.02.51	2	12	2 x Ball	150	120	115	85	160	40	30	11	10	6.5	140	110	6.5
25.200.03.51	3	14	2 x Ball	200	165	150	95	197	40	30	13.5	12	7.5	180	125	11
25.250.04.51	4	18	Straight	250	210	190	120	240	45	35	17.5	15	9.5	230	160	21
25.300.06.51	6	20	Straight	300	255	220	150	295	50	40	22	20	11	270	200	33
25.350.08.51	8	22	Straight	350	305	270	160	350	50	45	26	25	12	330	220	52
25.400.10.51	10	24	Straight	400	345	300	190	400	60	50	32	30	13	370	260	80

WLL= Working Load Limit.

- No test certificate possible.
- Groove in sheave may be adjusted to other wire rope diameters.

Minimum Ultimate Strength = 4 x WLL.

Vertical Directional Blocks



Bronze bushing

Stock No.	WLL (t)	Wire size up to (mm)	Bearing	Dimensions (mm)											Weight (kg)	
				D1	D2	A	B	C	F	G	H	T	R	TA		TB
25.125.01.10	1	10	Bronze	125	105	90	70	83	27	22	9	8	5.5	115	95	3
25.150.02.10	2	12	Bronze	150	120	115	85	95	40	30	11	10	6.5	140	110	5
25.200.03.10	3	14	Bronze	200	165	150	95	122	40	30	13.5	12	7.5	180	125	8
25.250.04.10	4	18	Bronze	250	210	190	120	155	45	35	17.5	15	9.5	230	160	17
25.300.06.10	6	20	Bronze	300	255	220	150	185	50	40	22	20	11	270	200	26
25.350.08.10	8	22	Bronze	350	305	270	160	220	50	45	26	25	12	330	220	41
25.400.10.10	10	24	Bronze	400	345	300	190	255	60	50	32	30	13	370	260	64

Minimum Ultimate Strength = 4 x WLL.

Ball or cylindrical roller bearing

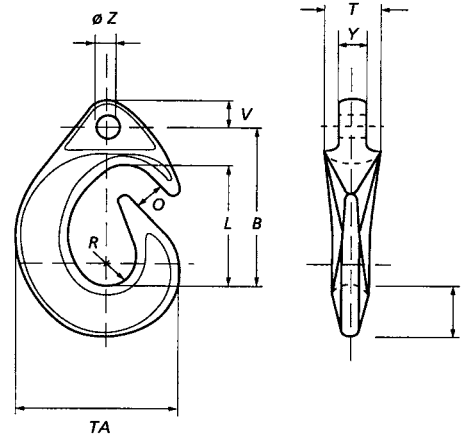
Stock No.	WLL (t)	Wire size up to (mm)	Bearing	Dimensions (mm)											Weight (kg)	
				D1	D2	A	B	C	F	G	H	T	R	TA		TB
25.125.01.11	1	10	2 x Ball	125	105	90	70	83	27	22	9	8	5.5	115	95	3
25.150.02.11	2	12	2 x Ball	150	120	115	85	95	40	30	11	10	6.5	140	110	5
25.200.03.11	3	14	2 x Ball	200	165	150	95	122	40	30	13.5	12	7.5	180	125	8
25.250.04.11	4	18	Straight	250	210	190	120	155	45	35	17.5	15	9.5	230	160	17
25.300.06.11	6	20	Straight	300	255	220	150	185	50	40	22	20	11	270	200	26
25.350.08.11	8	22	Straight	350	305	270	160	220	50	45	26	25	12	330	220	41
25.400.10.11	10	24	Straight	400	345	300	190	255	60	50	32	30	13	370	260	64

WLL= Working Load Limit.

- No test certificate possible.
- Groove in sheave may be adjusted to other wire rope diameters.

Minimum Ultimate Strength = 4 x WLL.

Cargo Hooks DIN 82017



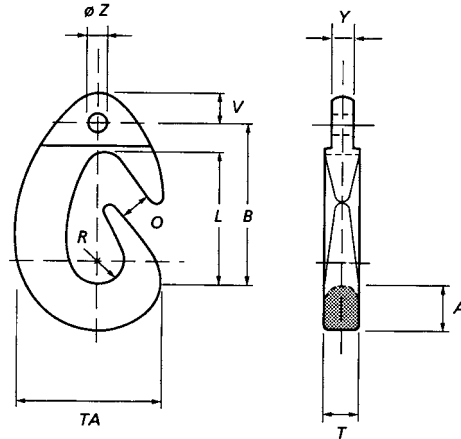
Cargo hooks according DIN 82017

Stock No.	WLL (t)	Dimensions (mm)										Weight (kg)
		A	B	L	O	ϕZ	R	T	TA	V	Y	
50.002.03.10	3	68	209	160	40	30	40	72	214	36	35	10
50.002.05.10	5	84	263	200	50	39	50	92	268	45	44	21
50.002.08.10	8	106	330	252	63	48	63	115	338	54	56	38
50.002.10.10	10	118	368	280	70	52	70	125	376	57	61	52

Minimum Ultimate Strength = 4 x WLL.

- Cargo hooks with higher working loads available on request.
- Dimensions can be adapted to shackle.
- Material STE 355.

Cargo Hooks NEN 2298



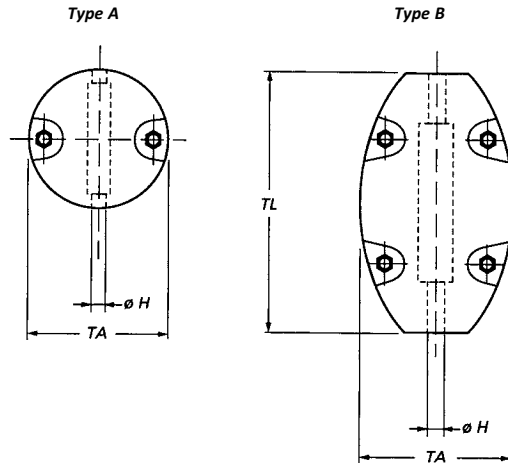
Cargo hooks approx. according NEN 2298

Stock No.	WLL (t)	Dimensions (mm)										Weight (kg)
		A	B	L	O	R	T	TA	V	Y	ØZ	
50.001.12.10	12.5	120	355	290	80	60	80	350	75	68	56	70
50.001.16.10	16	120	385	305	85	62	90	350	75	76	65	79
50.001.20.10	20	140	460	360	95	75	100	420	75	85	74	124
50.001.25.10	25	165	545	420	105	85	110	450	75	95	78	170
50.001.35.10	35	184	650	480	120	120	130	610	80	77	95	300
50.001.50.10	50	244	710	540	140	140	150	738	100	100	105	580

Minimum Ultimate Strength = 4 x WLL.

- Cargo hooks with higher working loads available on request.
- Dimensions can be adapted to shackle.
- Cargo hooks can be supplied with safety latch (last digits 11).
- Material S355J2G3

Split Overhaul Balls

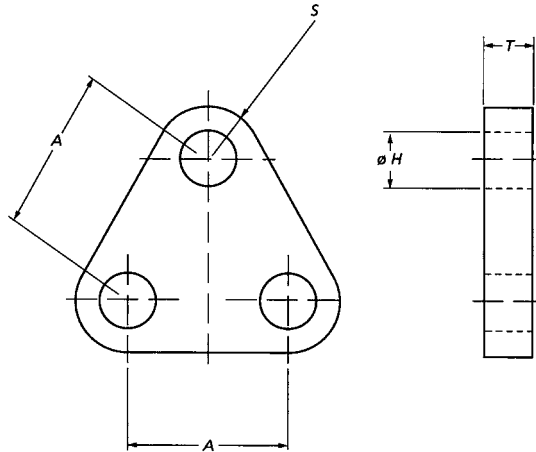


Split Overhaul Balls (Ball weights)

Stock No.	Type	Wire ϕ (mm)	Dimensions (mm)			Weight (kg)
			ϕH	TA	TL	
52.005.06.00	A	6	6	110	-	5
52.005.12.00	A	12	12	110	-	5
52.008.16.00	A	16	16	134	-	8
52.010.12.00	A	12	12	150	-	10
52.015.16.00	B	16	16	135	210	15
52.025.16.00	B	16	16	150	260	25
52.035.16.00	B	16	16	170	350	35
52.050.20.00	B	20	20	200	360	50
52.075.20.00	B	20	20	270	370	75
52.100.28.00	B	28	28	280	400	100

- Weights can be made suitable for larger wire diameters (at additional costs).

Triangle Plates NEN 3561 / DIN 82015



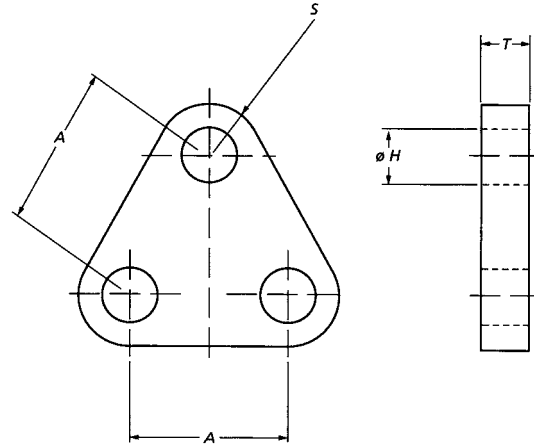
Triangle plates NEN 3561 / DIN 82015

Stock No.	WLL (t)	MBL (t)	Dimensions (mm)				Weight (kg)
			A	ØH	T	S	
51.008.02.00	2	10	75	23	25	25	2
51.008.03.00	3	15	90	30	30	30	3
51.008.05.00	5	25	115	39	35	40	5
51.008.08.00	8	40	140	48	45	50	10
51.008.10.00	10	50	145	52	50	55	15

- Other sizes possible. • Painted blue (RAL 5017).
- Material certificate according EN 10204 3.1 included.
- Proof Load certificate included.

Minimum Ultimate Strength = 5 x WLL.

Triangle Plates High Tensile Plates



Triangle plates, High tensile steel

Stock No.	WLL (t)	MBL (t)	Dimensions (mm)				Weight (kg)
			A	ØH	T	S	
51.100.09.50	9.5	47.5	100	35	40	35	5
51.100.12.00	12	60	110	40	40	40	6.5
51.100.13.50	13.5	67.5	120	42	45	42.5	8.5
51.100.17.00	17	85	130	45	45	50	9.5
51.100.25.00	25	125	140	55	50	65	13.5
51.100.35.00	35	175	150	60	60	70	19
51.100.55.00	55	275	180	75	80	85	37.5
51.100.85.00	85	425	220	90	90	110	62
51.101.20.00	120	600	240	105	110	130	95
51.101.50.00	150	750	260	115	130	135	133
51.101.75.00	175	875	290	115	140	145	163
51.102.00.00	200	1000	380	140	150	160	282
51.102.50.00	250	1250	450	150	170	175	413
51.103.00.00	300	1500	400	160	170	230	606
51.104.00.00	400	2000	480	180	200	260	964
51.105.00.00	500	2500	500	200	200	310	1234
51.106.00.00	600	3000	550	220	250	310	1640
51.107.00.00	700	3500	580	230	250	340	1927
51.108.00.00	800	4000	590	235	250	380	2265
51.109.00.00	900	4500	620	245	280	410	2910
51.110.00.00	1000	5000	650	255	300	430	3434
51.112.50.00	1250	6250	730	285	320	490	4719
51.115.00.00	1500	7500	780	305	320	570	6064

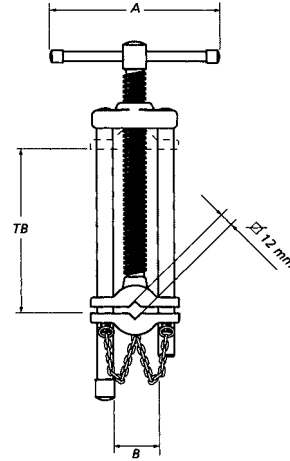
- Other sizes possible. • Painted blue (RAL 5017).
- Material certificate according EN 10204 3.1 included.
- Proof Load certificate included.

Minimum Ultimate Strength = 5 x WLL.



SEE OUR WARNINGS AND APPLICATION INSTRUCTIONS

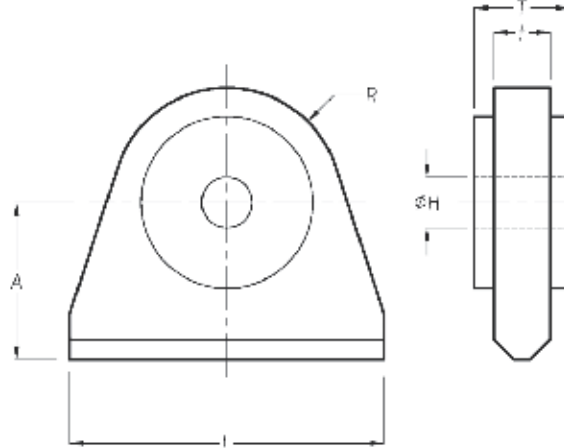
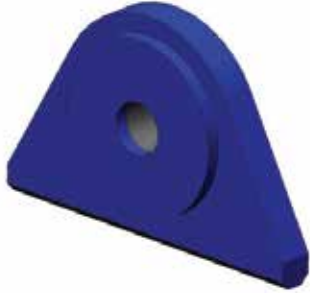
Riggers Screw



Riggers screw

Stock No.	Dimensions (mm)			Weight (kg)
	A	B	TB	
54.000.14.00	280	83	265	8

Pad Eyes Type S



Pad Eye Type S

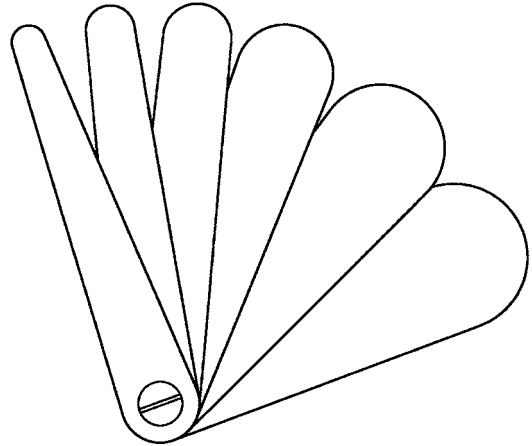
Stock No.	Type No.	Shackle size	WLL (t)	Wire		Dimensions (mm)						Weight (kg)
				(inches)	(mm)	L	A	ØH	R	t	T	
53.001.00.0S	S	$\frac{3}{8}$	1	$\frac{3}{8}$	9 - 10	76	32	11.5	26	14	14	0.3
53.001.50.0S	S	$\frac{7}{16}$	1.5	$\frac{3}{8}$	9 - 10	90	32	13.5	32	15	15	0.5
53.002.00.0S	S	$\frac{1}{2}$	2	$\frac{1}{2}$	12 - 13	100	38	17	35	18	18	0.7
53.003.25.0S	S	$\frac{5}{8}$	3.25	$\frac{3}{4}$	19	115	45	20	38	22	22	1.5
53.004.75.0S	S	$\frac{3}{4}$	4.75	$\frac{3}{4}$	19	140	51	23	45	25	25	2
53.006.50.0S	S	$\frac{7}{8}$	6.5	1	25 - 26	150	57	26	51	30	30	3
53.008.50.0S	S	1	8.5	1	25 - 26	180	64	29.5	64	35	35	5
53.009.50.0S	S	$1\frac{1}{8}$	9.5	1	25 - 26	203	76	33.5	76	40	40	7.5
53.012.00.0S	S	$1\frac{1}{4}$	12	$1\frac{1}{4}$	32	216	83	37	83	45	45	10
53.013.50.0S	S	$1\frac{3}{8}$	13.5	$1\frac{1}{4}$	32	228	89	40	89	30	50	10
53.017.00.0S	S	$1\frac{1}{2}$	17	$1\frac{3}{8}$	35	280	140	44	102	40	50	18
53.025.00.0S	S	$1\frac{3}{4}$	25	$1\frac{5}{8}$	41 - 42	305	140	53	121	40	60	23
53.035.00.0S	S	2	35	2	51	356	153	60	133	50	70	35
53.055.00.0S	S	$2\frac{1}{2}$	55	$2\frac{1}{2}$	63 - 64	482	165	74	152	50	90	55
53.085.00.0S	S	3	85	3	76 - 77	559	203	87	178	60	110	90
53.120.00.0S	S	$3\frac{1}{2}$	120	$3\frac{3}{4}$	95 - 96	711	254	100	229	70	120	170
53.150.00.0S	S	4	150	4	102	813	280	114	254	80	150	250

- Pad eyes will be supplied including material certificates (S355J2G3, EN 10204 3.1)
- $T \geq 75\%$ of inside width of shackle.
- $H \leq 106\%$ of diameter of pin.



SEE OUR WARNINGS AND APPLICATION INSTRUCTIONS

Groove Radius Gauges



Stainless steel groove radius gauges

Stock No.	R-min mm	R-max mm	Steps mm
61.035.165.05	3.5	16,5	0.5
61.170.300.05	17	30	0.5
61.040.250.10	4	25	1
61.260.520.10	26	52	1-3

- Groove radius gauges enable the measuring of the radius in grooves of wire rope sheaves.
- Gauges only provide an indication of the radius of the groove and is not a calibrated measuring instrument.
- The relation between the radius in the groove and the diameter of the wire rope is shown in the table on Page 3.02 (sheaves)