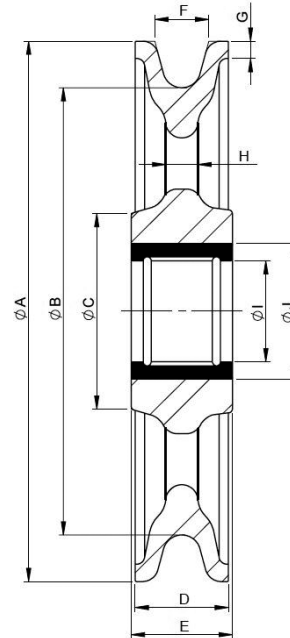


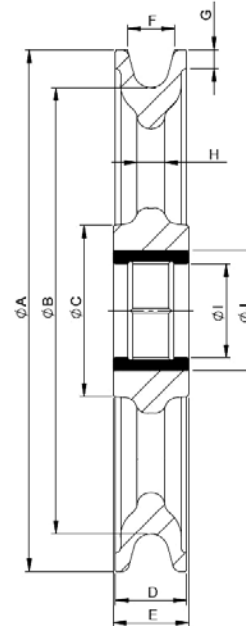
Sheaves





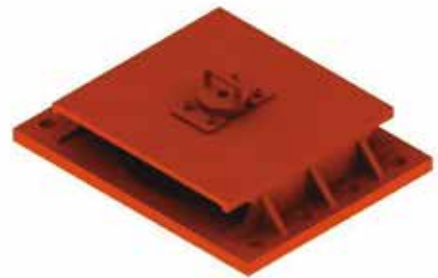
Medium Weight Oval Pattern Construction blocks

Sheave	Wire Rope	ØA	ØB	ØC	D	E	F	G	H	ØI	ØJ
Sheave of SL620B-6S	3/8 - 1/2	6	4.9	3	1.26	1.5	0.75	0.26	0.47	1.5	2
Sheave of SL620B-8S	1/2 - 5/8	8	6.8	3	1.26	1.5	0.79	0.26	0.47	1.5	2
Sheave of SL620B-10S	5/8 - 3/4	10	8.5	3	1.26	1.5	1.02	0.26	0.47	1.5	2



Extra Heavy Oval Pattern Construction blocks

Sheave	Wire Rope	ØA	ØB	ØC	D	E	F	G	H	ØI	ØJ
Sheave of SL640B-8S	5/8 - 3/4	8	5	3.07	1.5	1.62	0.95	0.26	0.52	1.5	2
Sheave of SL640B-10S	5/8 - 7/8	10	8.28	3.74	1.63	1.73	0.95	0.43	0.63	1.93	2.5
Sheave of SL640B-12S	5/8 - 1	12	10.28	3.94	1.63	1.73	1.08	0.43	0.63	2.17	2.76
Sheave of SL640B-14S	3/4 - 1	14	12.21	5	2	2.13	1.25	0.27	0.63	2.72	3.27
Sheave of SL640B-16S	3/4 - 1	16	13.8	6.02	2.3	2.5	1.25	0.35	0.77	2.95	3.5



Aluminum Snatch Block

Size	Working Load Limit (lbs.)	Sheave Diameter (in.)	Wire Rope (in.)	Weight (lbs.)
4	1000	4	1/4	5.5



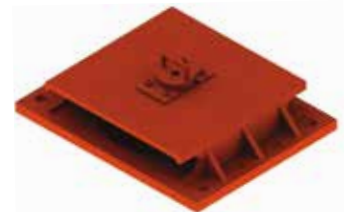
PJ Style Snatch Block

Size	Working Load Limit (lbs.)	Sheave Diameter (in.)	Wire Rope (in.)	Weight (lbs.)
10	6600	6	1/2 - 5/8	23
12	11000	7 5/7	5/8 - 3/4	40



Horizontal Sheave Lead Block

Size	Working Load Limit (lbs.)	Sheave Diameter (in.)	Wire Rope (in.)	Weight (lbs.)
8	22000	8	1	79
14	44000	14	1 1/4	209



Vertical Sheave Lead Block

Size	Sheave Diameter (in.)	Wire Rope (in.)	Weight (lbs.)
14	14	7/8	174
20	20	1	330
24	24	1 1/4	524
26	26	1 1/2	587



- Blocks built to 4:1 Design Factor.
- Larger sizes available upon request.
- The dimensions in this table are indicative only.
- Blocks shown here are standard models.
- Custom models available.

See our warnings & application instructions

Diamond Steel Shell Wire Rope Block

Size	Working Load Limit (lbs.)			Sheave Diameter (in.)	Wire Rope (in.)
	Single	Double	Triple		
6	4400	5500	6600	6	3/8
8	5500	7700	9900	8	1/2 - 5/8
10	6600	9900	13200	10	1/2 - 5/8
12	11000	22000	26600	12	3/4



Extra Heavy Diamond Steel Shell Wire Rope Block

Size	Working Load Limit (lbs.)			Sheave Diameter (in.)	Wire Rope (in.)
	Single	Double	Triple		
8	16500	22000	22000	8	1/2 - 5/8
10	22000	33000	44000	10	5/8 - 3/4
12	22000	33000	44000	12	5/8 - 3/4
14	22000	44000	88000	14	3/4 - 7/8



Reel Type Snatch Block

Size	Working Load Limit (lbs.)	Sheave Diameter (in.)	Wire Rope (in.)	Weight (lbs.)
18	66000	14	3/4	301
20	88000	16	1	343



Trawl Block

Size	Working Load Limit (lbs.)	Sheave Diameter (in.)	Weight (lbs.)
12	22000	12	90
16	44000	15 7/8	172



Purse Seine Block

Size	Working Load Limit (lbs.)	Sheave Diameter (in.)	Wire Rope (in.)	Weight (lbs.)
10	11000	6	1/2	50
12	17600	7 1/2	5/8	77
14	22000	8	3/4	95
16	33000	12	7/8	200
18	44000	14	1	264
20	55000	18	1 1/8	305



Extra Heavy Oval Pattern Steel Shell Wire Rope Block

Size	Working Load Limit (lbs.)			Sheave Diameter (in.)	Wire Rope (in.)
	Single	Double	Triple		
12	22000	44000	44000	12	3/4 - 7/8
14	33000	44000	55000	14	7/8 - 1
16	44000	44000	44000	16	1 - 1 1/8



Steel Shell Snatch Block Type "PJ" Wire & Manila Rope

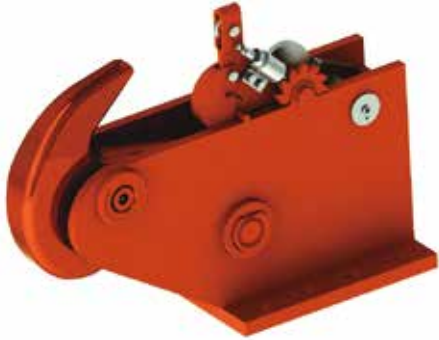
Size	Working Load Limit (lbs.)	Sheave Diameter (in.)	Wire Rope (in.)
8	8800	4.5	1/4
10	11000	6	3/8
12	15400	8	1/2
14	22000	10	5/8



Standard Oval Pattern Wire Rope Block

Size	Working Load Limit (lbs.)			Sheave Diameter (in.)	Wire Rope (in.)
	Single	Double	Triple		
8	5500	7700	9900	8	5/8
10	6600	9900	13200	10	3/4
12	11000	22000	26600	12	7/8







Stainless Steel



Reinforced Ring

1 1/4" x 10"
1 1/2" x 10"



Bosh Ring

A-320
A-315



Ring type Stirrup

5/8" to 1 1/4"



Pear Ring Type

with reel and cartridge
1 1/4" and 1 3/8"



Pear Ring type

with reel and cartridge
1 1/4" and 1 3/8"



Circular Ring

5/8" to 1 1/4"

Forged



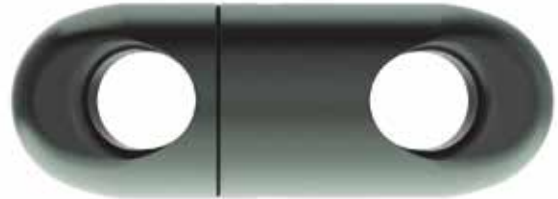
- Heat treatment.
- Surface flat contact.
- Extends the cable life.
- Wear by abrasion 50% Less Than cast ring.

Swivel with ball bearing

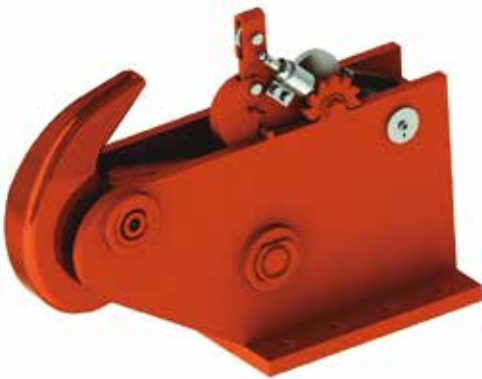


Size	Working Load Limit (lbs.)	Diameter Wire	Weight (lbs.)
5/8	4400	5/8	1.3
3/4	6600	3/4	2
7/8	11000	7/8	2.8
1	16500	1	4.3

- High tensile strength and wear by corrosion.
- High speed of rotation.
- Angular contact bearings or bronze bushing SAE62.



Molas



Mola Tuna

#5 - 39600 Lbs.

- Blocks built to 4:1 Design Factor.
- Larger sizes available upon request.
- The dimensions in this table are indicative only.
- Blocks shown here are standard models.
- Custom models available.

See our warnings & application instructions



Mola standard steel

#1 - 11000 Lbs.

#2 - 17600 Lbs.

#3 - 26400 Lbs.

#4 - 33000 Lbs.